

ILS or LOC/DME Y RWY 31C

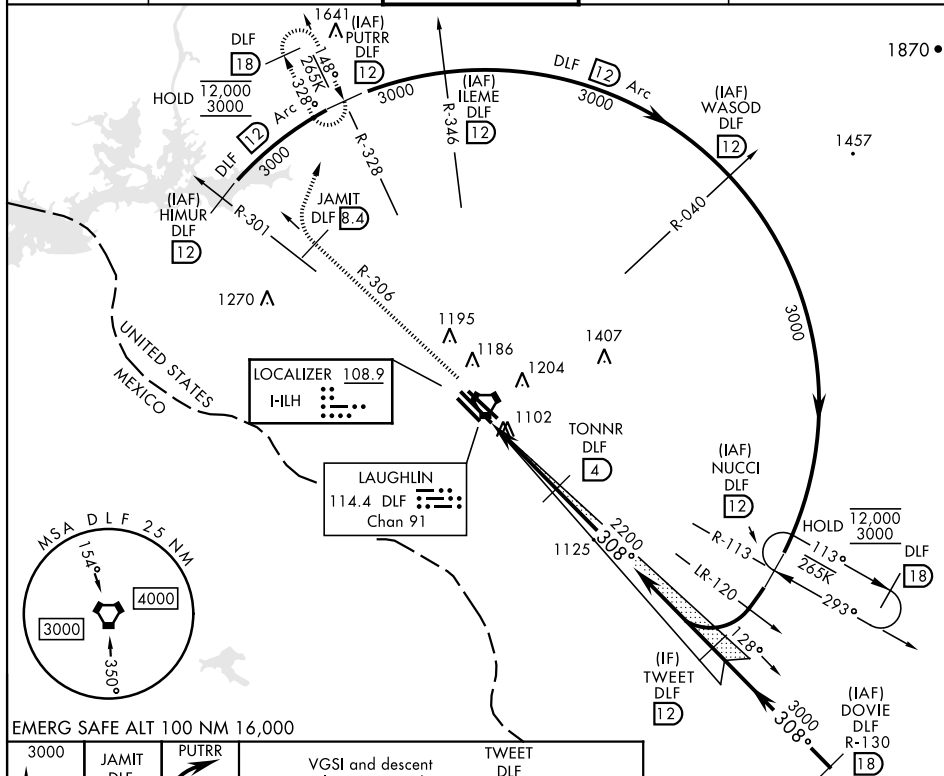
[USAF]

LAUGHLIN AFB (KDLF)

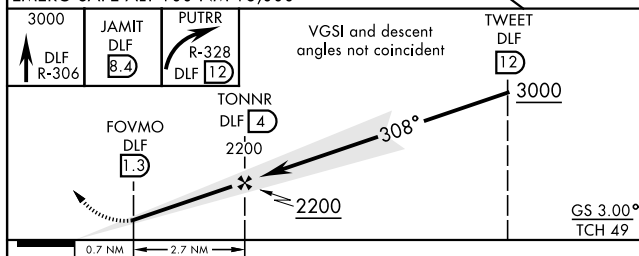
* Circling W of Rwy 13R-31L not authorized.

MISSED APPROACH: Climb to 3000 on DLF VORTAC R-306 to 8.4 DME (JAMIT), then turn right to intercept DLF R-328 to 12 DME (PUTRR) and hold.

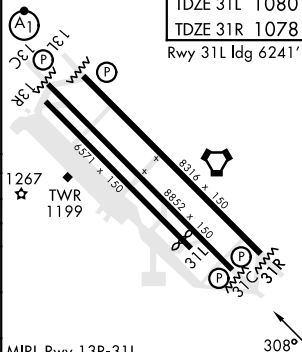
ATIS ★ 114.4 269.9	DEL RIO APP CON 119.6 259.1	TOWER ★ 125.2 307.375	GND CON 275.8	CLNC DEL 120.5 335.8
-----------------------	--------------------------------	--------------------------	------------------	-------------------------



EMERG SAFE ALT 100 NM 16,000



ELEV 1082	TDZE 31C 1079
	TDZE 31L 1080
	TDZE 31R 1078
	Rwy 31L Idg 6241'



CATEGORY	A	B	C	D	E
S-LS 31C	1279- $\frac{3}{4}$		200 (200- $\frac{3}{4}$)		
S-LOC 31C	1360-1	281 (300-1)	1360- $\frac{7}{8}$ 281 (300- $\frac{7}{8}$)		
SIDESTEP 31L	1360-1	280 (300-1)	1360-1 $\frac{1}{2}$ 280 (300-1 $\frac{1}{2}$)	1360-2	280 (300-2)
SIDESTEP 31R	1380-1	302 (300-1)	1380-1 $\frac{1}{2}$ 302 (300-1 $\frac{1}{2}$)	1380-2	302 (300-2)
C CIRCLING*	1500-1 418 (500-1)	1540-1 458 (500-1)	1700-1 $\frac{3}{4}$ 618(700-1 $\frac{3}{4}$)	1700-2 618 (700-2)	1740-2 $\frac{1}{4}$ 658(700-2 $\frac{1}{4}$)

MIRL Rwy 13R-31L
HIRL Rwy 13C-31C, 13L-31R

DEL RIO, TEXAS

29°22'N-100°47'W

LAUGHLIN AFB (KDLEF)

Amdt 6 05OCT23

ILS or LOC/DME Y RWY 31C

SC-3, 10 JUL 2025 to 07 AUG 2025