

DEL RIO, TEXAS

ILS or LOC/DME Y RWY 13C

LOC I-DLF <u>110.3</u>	APCH CRS 128°	Rwy Idg 8852 8316 6571 TDZE 1082 1078 1077 Arpt Elev 1082
----------------------------------	-------------------------	--

[USAF]

LAUGHLIN AFB (KDLP)

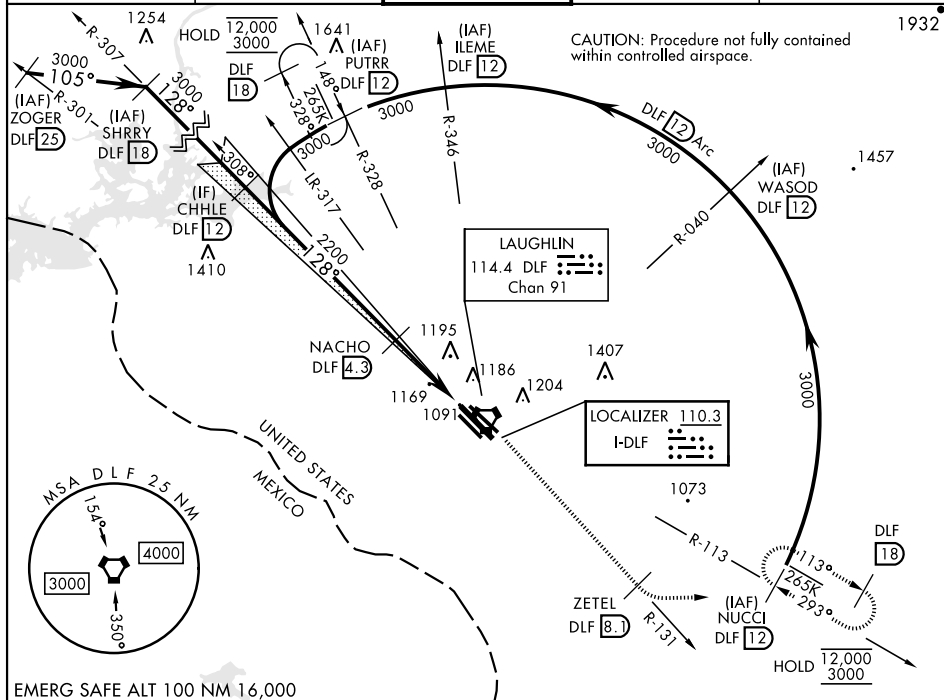
T * When ALS inop, increase RVR to 40 and vis to $\frac{3}{4}$ mile.
 ** When ALS inop, increase CAT AB RVR to 55 and vis to 1 mile, CAT CDE RVR to 50 and vis to 1 mile.
 *** Circling W of Rwy 13R-31L not authorized.

ALSF-1

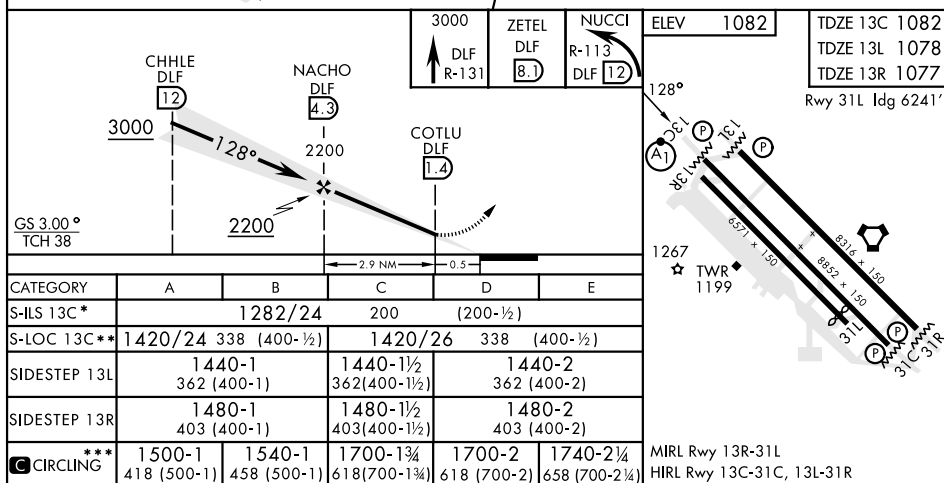


MISSED APPROACH: Climb to 3000 on DLF
VORTAC R-131 to 8.1 DME (ZETEL), then turn left to
intercept DLF R-113 to 12 DME (NUCCI) and hold.

ATIS ★ 114.4 269.9	DEL RIO APP CON 119.6 259.1	TOWER ★ 125.2 307.375	GND CON 275.8	CLNC DEL 120.5 335.8
-----------------------	--------------------------------	--------------------------	------------------	-------------------------



EMERG SAFE ALT 100 NM 16,000



DEL RIO, TEXAS

29°22'N-100°47'W

LAUGHLIN AFB (KDLF)

Amdt 6 20FEB25

ILS or LOC/DME Y RWY 13C

SC-3, 10 JUL 2025 to 07 AUG 2025

SC-3, 10 JUL 2025 to 07 AUG 2025