

DEL RIO, TEXAS

24305

HI-ILS or LOC/DME Z RWY 31C

LOC HI-LH <b>108.9</b>	APCH CRS <b>308°</b>	Rwy Idg <b>8852 6241 8316</b>	31C	31L	31R
		TDZE <b>1079 1080 1078</b>			
		Arpt Elev <b>1082</b>			

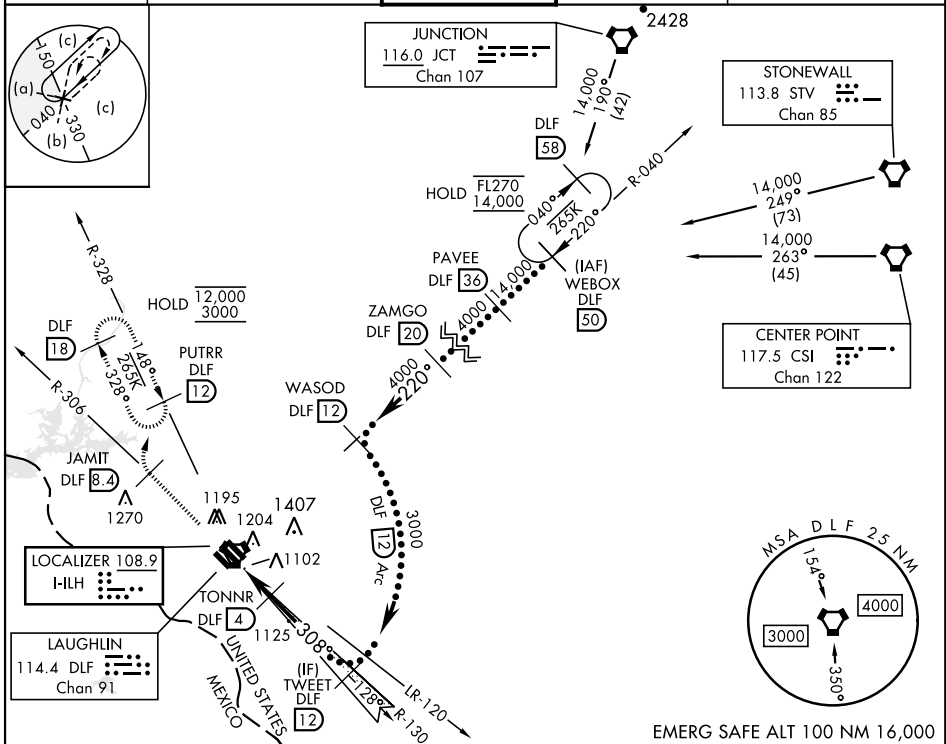
[USAF]

LAUGHLIN AFB (KDLF)

\* Circling not authorized in sector SW of Rwy 13R-31L.

MISSED APPROACH: Climb to 3000 on DLF VORTAC R-306 to 8.4 DME (JAMIT), then turn right to intercept DLF R-328 to 12 DME (PUTRR) and hold.

ATIS ★ <b>114.4 269.9</b>	DEL RIO APP CON <b>119.6 259.1</b>	TOWER ★ <b>125.2 307.375</b>	GND CON <b>275.8</b>	CLNC DEL <b>120.5 335.8</b>
------------------------------	---------------------------------------	---------------------------------	-------------------------	--------------------------------



3000	JAMIT DLF 8.4	PUTRR R-328 DLF 12	TONNR DLF 4	TWEET DLF 12	ELEV 1082	TDZE 31C 1079	TDZE 31L 1080	TDZE 31R 1078
↑ DLF R-306								Rwy 31L Idg 6241'
VGS and descent angles not coincidental.					EMERG SAFE ALT 100 NM 16,000			
FOVMO DLF 1.3					GS 3.00° TCH 49			
0.7 NM ← 2.7 NM					1267 TWR 1199			
CATEGORY	A	B	C	D	E			
S-ILS 31C	1279-¾		200	(200-¾)				
S-LOC 31C	1360-1	281 (300-1)	1360-7/8		281 (300-7/8)			
SIDESTEP 31L	1360-1	280 (300-1)	1360-1½ 280 (300-1½)	1360-2 280 (300-2)				
SIDESTEP 31R	1380-1	302 (300-1)	1380-1½ 302 (300-1½)	1380-2 302 (300-2)				
CIRCLING *	1500-1 418 (500-1)	1540-1 458 (500-1)	1700-1¾ 618 (700-1¾)	1700-2 618 (700-2)	1740-2¼ 658 (700-2¼)	HRL Rwy 13C-31C, 13L-31R		
						MRL Rwy 13R-31L		

DEL RIO, TEXAS

29°22'N-100°47'W

LAUGHLIN AFB (KDLF)

Amdt 6 05OCT23

HI-ILS or LOC/DME Z RWY 31C

SC-3, 10 JUL 2025 to 07 AUG 2025