
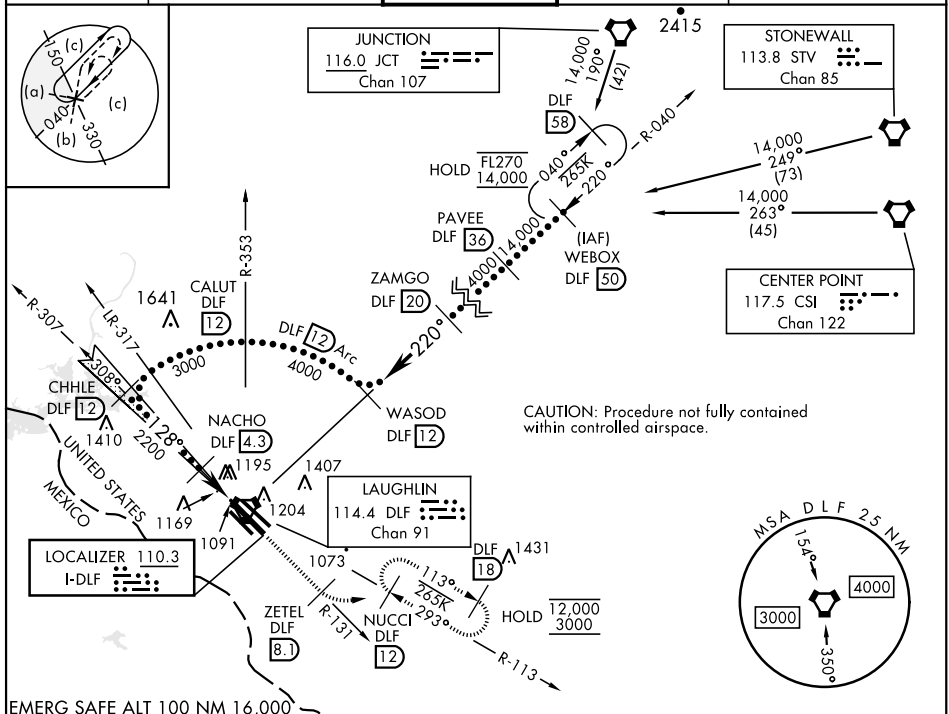


DEL RIO, TEXAS

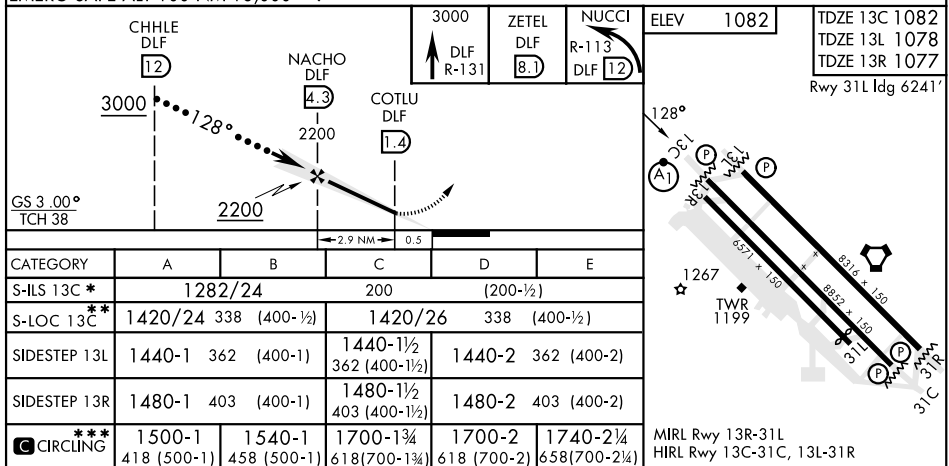
HI-ILS or LOC/DME Z RWY 13C

LOC I-DLF <b><u>110.3</u></b>		APCH CRS <b>128°</b>	Rwy Idg TDZE Arpt Elev <b>8852 8316 6571</b> <b>1082 1078 1077</b> <b>1082</b>	[USAF] LAUGHLIN AFB (KDLF)	
<p><b>▼</b> * When ALS inop, increase RVR to 40 and vis to <math>\frac{3}{4}</math> mile.</p> <p><b>**</b> When ALS inop, increase CAT AB RVR to 55 and vis to 1 mile, CAT CDE RVR to 50 and vis to 1 mile.</p> <p><b>***</b> Circling W of Rwy 13R-31L not authorized.</p>				<p>ALSF-1</p> <p>(A1) </p> <p>MISSED APPROACH: Climb to 3000 on DLF VORTAC R-131 to 8.1 DME (ZETEL), then turn left to intercept DLF R-113 to 12 DME (NUCCI) and hold.</p>	

ATIS ★ 114.4 269.9	DEL RIO APP CON 119.6 259.1	TOWER ★ 125.2 307.375	GND CON 275.8	CLNC DEL 120.5 335.8
-----------------------	--------------------------------	--------------------------	------------------	-------------------------



EMERG SAFE ALT 100 NM 16,000



DEL RIO, TEXAS

Amdt 6 20FEB25

29°22'N-100°47'W

LAUGHLIN AFB (KDLF)

HI-ILS or LOC/DME Z RWY 13C