



DAYTONA BEACH, FLORIDA

AL-110 (FAA)

24305

WAAS CH <b>77533</b> <b>W25A</b>	APP CRS <b>250°</b>	Rwy Idg <b>10293</b> TDZE <b>34</b> Apt Elev <b>34</b>
--	------------------------	--

RNAV (GPS) RWY 25R  
DAYTONA BEACH INTL (DAB)

 DME/DME RNP-0.3 NA.			MISSED APPROACH: Climb to 1700 direct COCAD and hold.	
<b>ATIS</b> <b>132.875</b>	<b>DAYTONA APP CON</b> <b>125.8 269.075</b>	<b>DAYTONA TOWER</b> <b>120.7 257.8</b>		<b>GND CON</b> <b>121.9 348.6</b>
<b>CLNC DEL 119.3</b>				

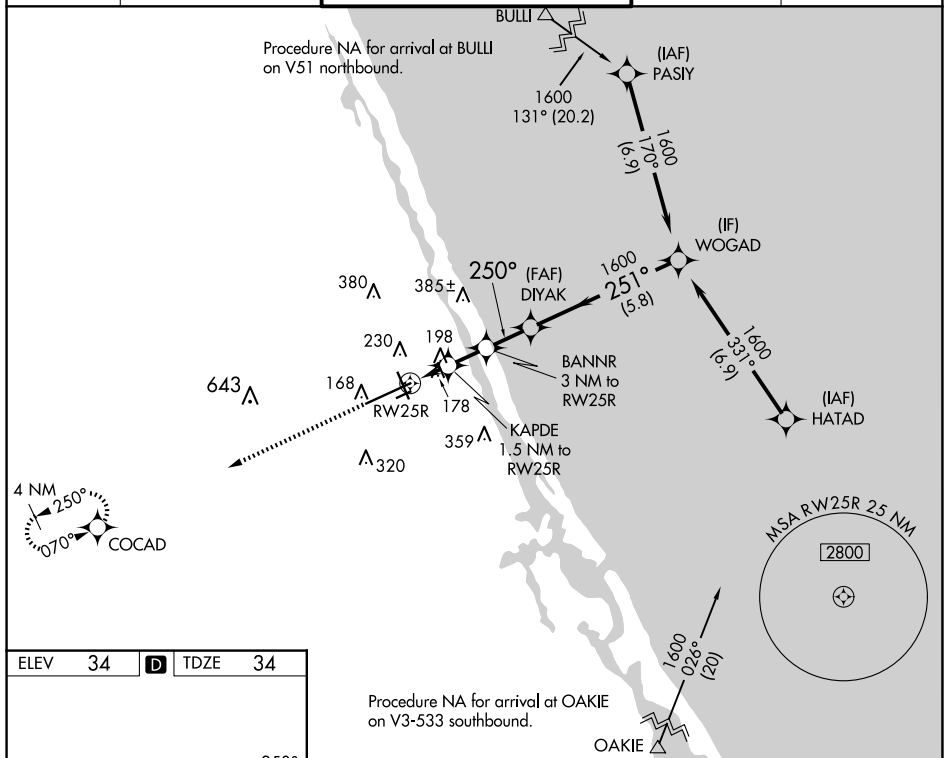


Figure 10 is an example of a non-precision approach chart. It includes a 3D perspective view of the runway layout and a 2D plan view. The 3D view shows the runway layout with various navigation aids and distances. The 2D plan view shows the runway layout with various navigation aids and distances. Key features include: TDZ/CL Rwy 7L, HIRL Rwy 7L-25R, MIRL Rwy 7R-25L and 16-34, REIL Rwy 7R, 16, 25L and 34, TWR 149, 3195 X 100, 10500 X 150, 6000 X 150, 106, 91, 105, 104, 103, 102, 101, 100, 99, 98, 97, 96, 95, 94, 93, 92, 91, 90, 89, 88, 87, 86, 85, 84, 83, 82, 81, 80, 79, 78, 77, 76, 75, 74, 73, 72, 71, 70, 69, 68, 67, 66, 65, 64, 63, 62, 61, 60, 59, 58, 57, 56, 55, 54, 53, 52, 51, 50, 49, 48, 47, 46, 45, 44, 43, 42, 41, 40, 39, 38, 37, 36, 35, 34, 33, 32, 31, 30, 29, 28, 27, 26, 25, 24, 23, 22, 21, 20, 19, 18, 17, 16, 15, 14, 13, 12, 11, 10, 9, 8, 7, 6, 5, 4, 3, 2, 1, 0.

DAYTONA BEACH, FLORIDA  
Amdt 4 18SEP14

29°11'N-81°03'W

DAYTONA BEACH INTL (DAB)  
RNAV (GPS) RWY 25R

SE-3, 10 JUL 2025 to 07 AUG 2025

SE-3, 10 JUL 2025 to 07 AUG 2025