

APCH CRS	Rwy Idg	7000
053°	TDZE	813
	Arprt Elev	823

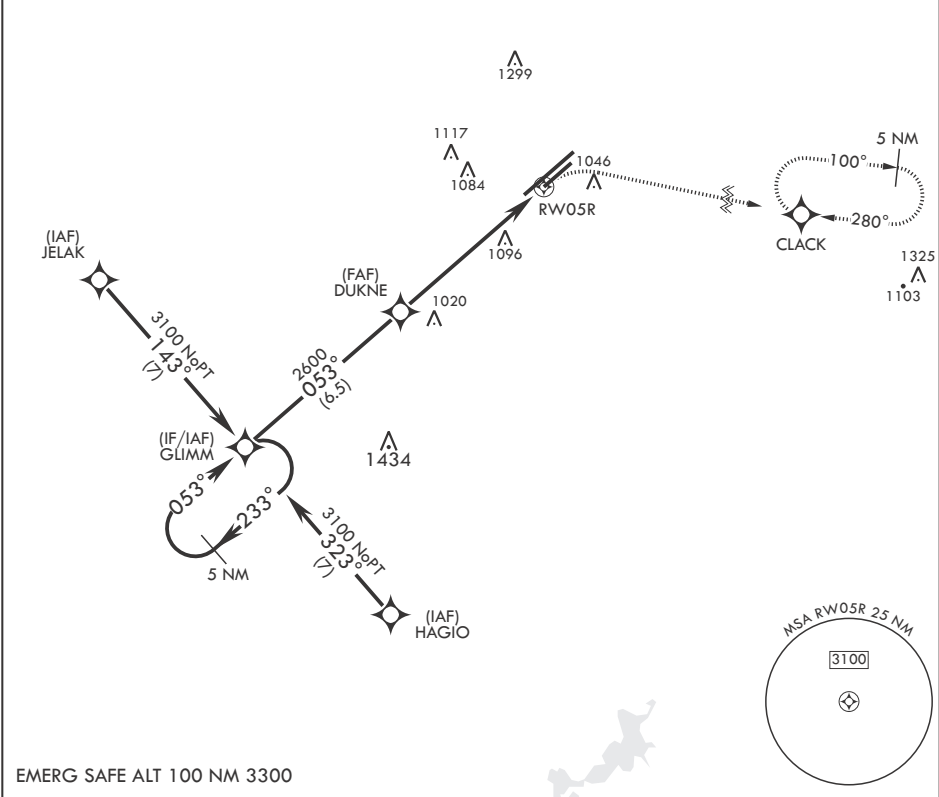
- (USAF)

WRIGHT PATTERSON AFB (KFFO)

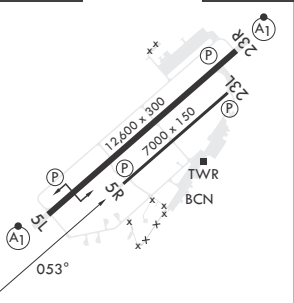
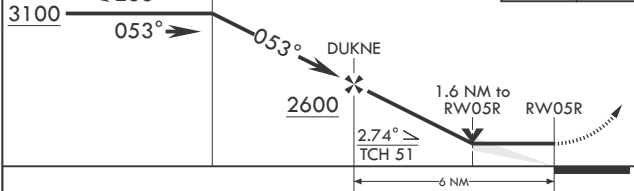
* When Rwy 23R VGSi inop, circling to Rwy 23R NA at night.	MISSED APPROACH: Turn right climb to 3100 direct CLACK WPT and hold.
--	--

ATIS 124.475 269.9	COLUMBUS APP CON/DEP CON 118.85 269.275	PATTERSON TOWER 127.8 281.45	GND CON 121.8 335.8
-----------------------	--	---------------------------------	------------------------

DME/DME RNP-0.3 NA



5 NM Holding Pattern GLIMM 3100 233° 053°	VGSi and descent angles not coincident. (VGSi Angle 3.00° TCH 51)	3100 CLACK ELEV 823 TDZE 813
---	---	---------------------------------------



CATEGORY	A	B	C	D
LNVA MDA	1380-1 567 (600-1)	1440-1 617 (700-1)	1380-1½ 737 (800-2)	567 (600-1½) 1620-2½ 797 (800-2½)
CIRCLING*	1380-1 557 (600-1)	1440-1 617 (700-1)	1560-2 737 (800-2)	1620-2½ 797 (800-2½)

HIRL Rwy 5L-23R
MIRL Rwy 5R-23L

EC-2, 10 JUL 2025 to 07 AUG 2025

EC-2, 10 JUL 2025 to 07 AUG 2025