

RNAV (GPS) RWY 5L

APCH CRS	Rwy Idg	12,600
053°	TDZE	803
	Arprt Elev	823

- (USAF)

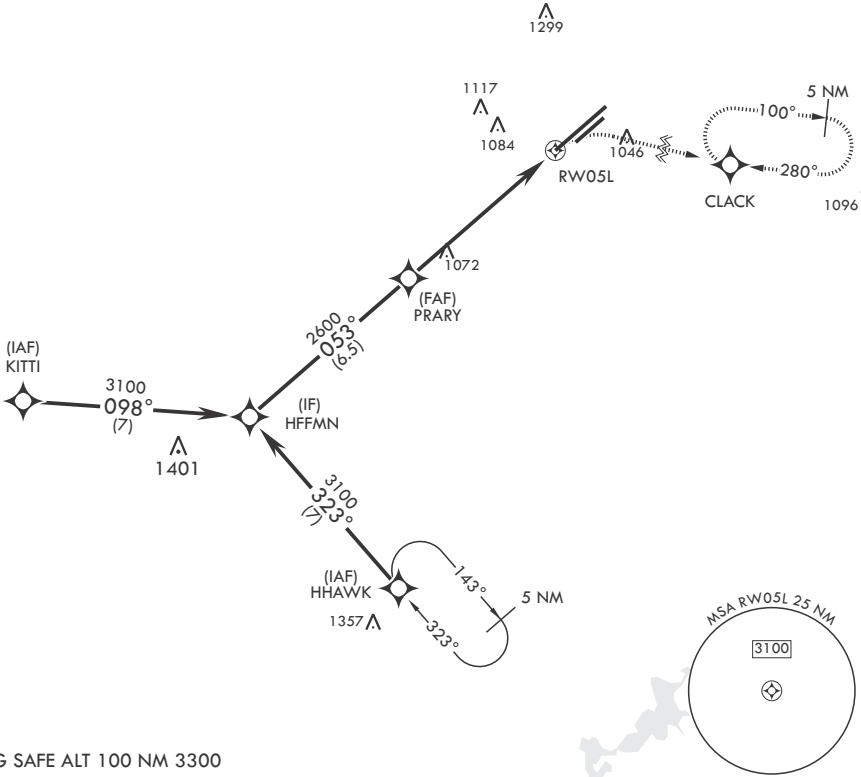
WRIGHT PATTERSON AFB (KFFO)

⚠ \* When ALS inop increase CAT AB RVR to 55, vis to 1 mile; CAT CD vis to 1 5/8 miles.  
\*\* When Rwy 23R VGSi inop, circling to Rwy 23R NA at night.

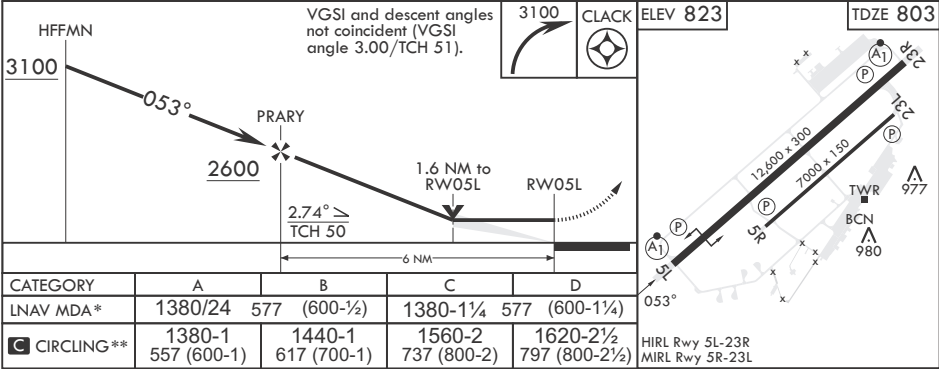
ALSf-1 MISSED APPROACH: Turn right climb to 3100 direct CLACK WPT and hold.

ATIS 124.475 269.9	COLUMBUS APP CON/DEP CON 118.85 269.275	PATTERSON TOWER 127.8 281.45	GND CON 121.8 335.8
-----------------------	--	---------------------------------	------------------------

DME/DME RNP-0.3 NA



EMERG SAFE ALT 100 NM 3300



RNAV (GPS) RWY 5L