

ILS or LOC RWY 23R

LOC I-FFO 109.7	APCH CRS 233°	Rwy Idg 12,600 THRE 823 Arpt Elev 823
---------------------------	-------------------------	--

[USAF]

WRIGHT-PATTERSON AFB (KFFO)

DME or RADAR required for Localizer.

- ▼ *When ALS inop, increase RVR to 40 and vis to ¾ mile.
**When ALS inop, increase CAT AB RVR to 55 and vis to 1 mile,
CAT CDE vis to 1¾ miles.



† MISSED APPROACH: Climb via FFO R-233 to 2000, at 3 DME turn left direct CLACK to 3000 and hold.

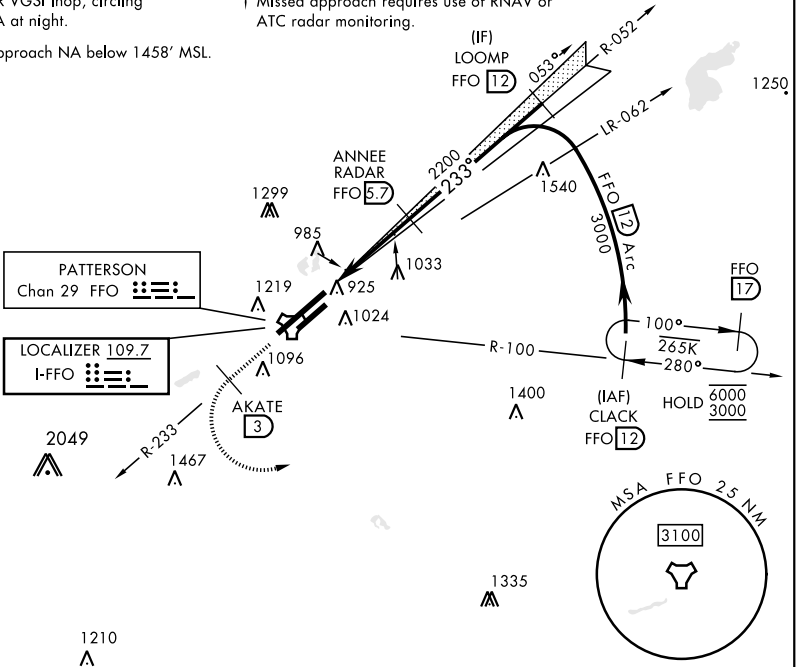
ATIS 124.475 269.9	COLUMBUS APP CON 118.85 269.275	PATTERSON TOWER 127.8 281.45	GND CON 121.8 335.8
------------------------------	---	--	-------------------------------

*** When Rwy 23R VGSi inop, circling to Rwy 23R NA at night.

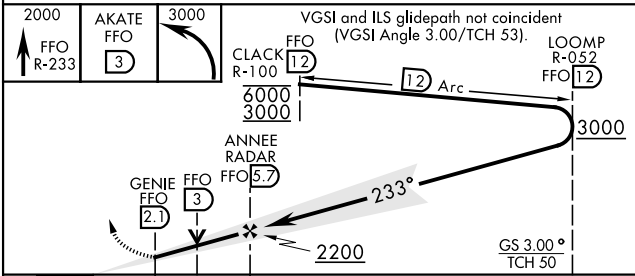
† Missed approach requires use of RNAV or ATC radar monitoring.

Autocoupled approach NA below 1458' MSL.

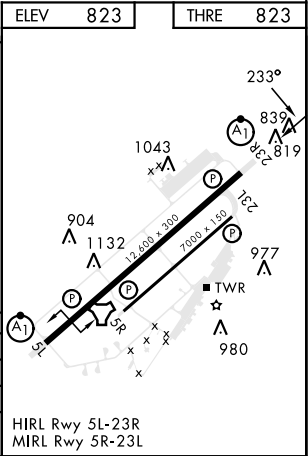
1290



EMERG SAFE ALT 100 NM 3700



	0.5 NM		← 3.6 NM →		
CATEGORY	A	B	C	D	E
S-ILS 23R *	1023/24		200	(200-½)	
S-LOC 23R **	1320/24	497 (500-½)	1320/50	497 (500-1)	
CIRCLING ***	1380-1	1440-1	1560-2	1620-2½	1620-2¾
	557 (600-1)	617 (600-1)	737 (800-2)	797 (800-2½)	797 (800-2¾)



ILS or LOC RWY 23R