

WAAS CH 90414 W06B	APP CRS 061°	Rwy Ldg TDZE Apt Elev	7001 1009 1009
--	------------------------	-----------------------------	---

RNAV (GPS) RWY 6R

JAMES M COX DAYTON INTL (DAY)

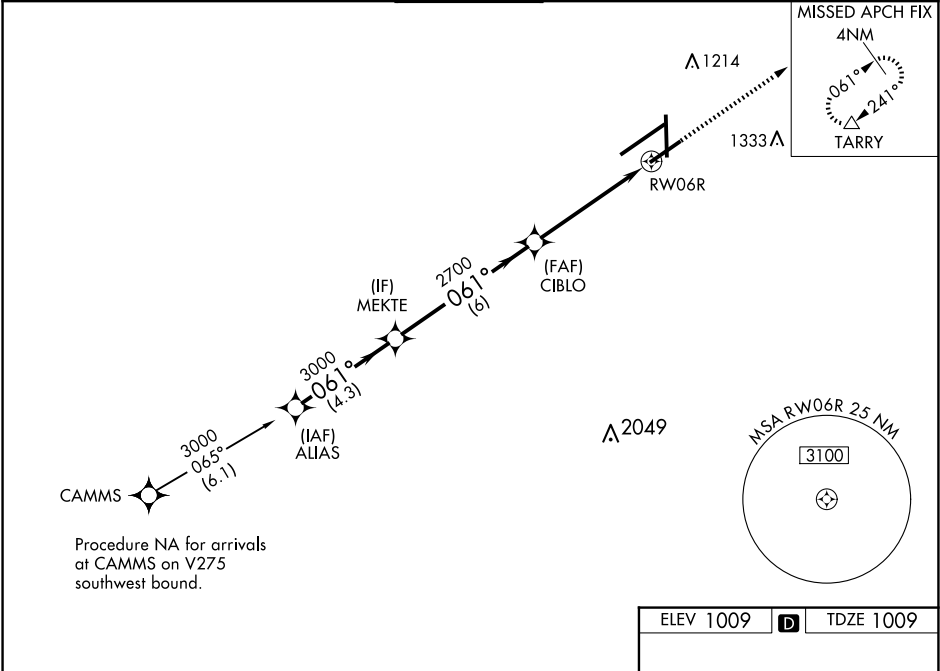
RNP APCH - GPS.

▼

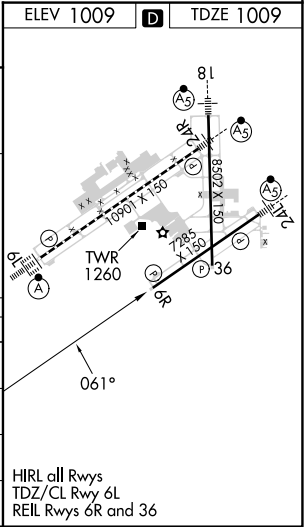
For uncompensated Baro-VNAV systems, LNAV/VNAV NA below -19°C or above 54°C. Rwy 6R helicopter visibility reduction below ¾ SM NA. Simultaneous approach authorized. LNAV procedure NA during simultaneous operations. Use of FD or AP required during simultaneous operations.

MISSED APPROACH: Climb to 3000 direct TARRY and hold.

ATIS 125.8	COLUMBUS APP CON 134.45 323.15	DAYTON TOWER 119.9 257.7	GND CON 121.9	CLNC DEL 121.75
----------------------	--	------------------------------------	-------------------------	---------------------------



VGSI and RNAV glidepath not coincident (VGSI Angle 3.00/TCH 50).				
<div>ALIAS MEKTE CIBLO RWY 06R</div> <div>3000 — 061° — 3000 — 061° — 2700 — 1.5 NM to RWY 06R</div> <div>GP 3.00° TCH 53</div> <div>4.3 NM 6 NM 3.6 NM 1.5 NM</div>				
CATEGORY	A	B	C	D
LPV DA	1259-¾		250 (300-¾)	
LNAV/VNAV DA	1496-1¾		487 (500-1¾)	
LNAV MDA	1520-1	511 (600-1)	1520-1½ 511 (600-1½)	1520-1¾ 511 (600-1¾)
CIRCLING	1580-1	571 (600-1)	1580-1½ 571 (600-1½)	1640-2 631 (700-2)



EC-2, 10 JUL 2025 to 07 AUG 2025

EC-2, 10 JUL 2025 to 07 AUG 2025