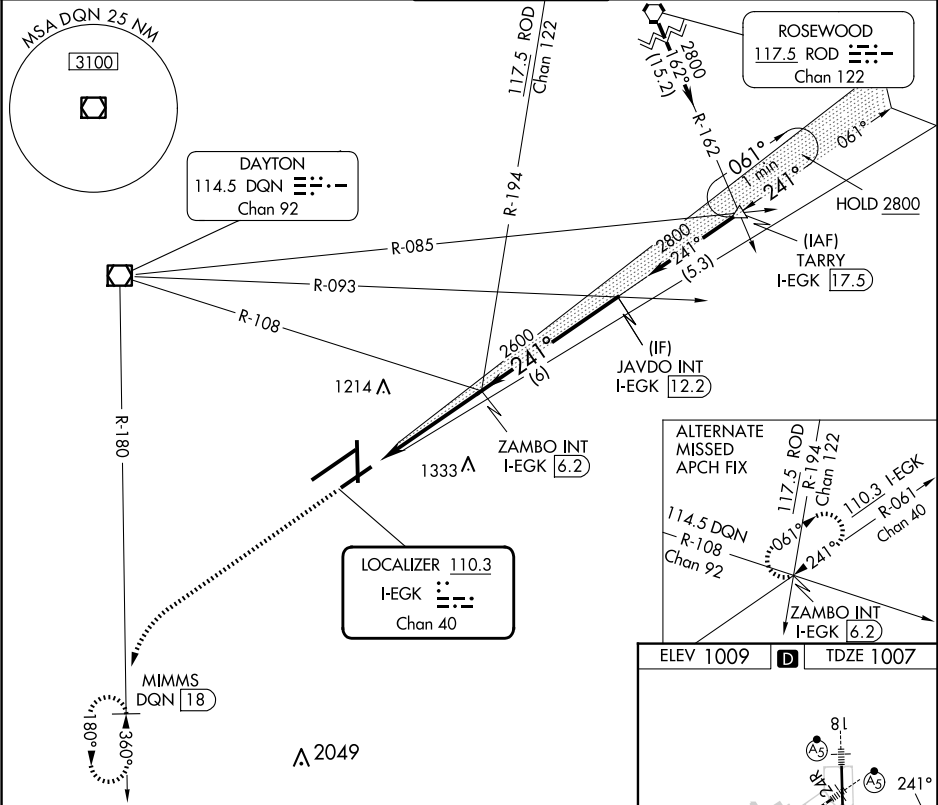


LOC I-EGK <b>110.3</b> Chan <b>40</b>	APP CRS <b>241°</b>	Rwy Idg TDZE Apt Elev <b>7001</b> <b>1007</b> <b>1009</b>
---	------------------------	--

ILS or LOC RWY 24L  
JAMES M COX DAYTON INTL (DAY)

DME required.	MALSR	MISSED APPROACH: Climb to 3000 on heading 241° and DQN R-180 to MIMMS/DQN 18 DME and hold.
Simultaneous approach authorized. # RVR 1800 authorized with use of FD or AP or HUD to DA.		

ATIS <b>125.8</b>	COLUMBUS APP CON <b>134.45 323.15</b>	DAYTON TOWER <b>119.9 257.7</b>	GND CON <b>121.9</b>	CLNC DEL <b>121.75</b>
----------------------	--	------------------------------------	-------------------------	---------------------------



3000 ↑ hdg 241° *LOC only.	DQN R-180	MIMMS DQN 18	VGSI and ILS glidepath not coincident (VGSI Angle 3.00/TCH 54). JAVDO INT I-EGK 12.2 ZAMBO INT I-EGK 6.2	
			2600	2800
			2600	GS 3.00° TCH 50
	1.2 NM	3.7 NM	6 NM	
CATEGORY	A	B	C	D
S-ILS 24L #		1207/24	200 (200-½)	
S-LOC 24L	1440/24	433 (500-½)	1440/40	433 (500-¾)
CIRCLING	1580-1	571 (600-1)	1580-1½ 571 (600-1½)	1640-2 631 (700-2)

