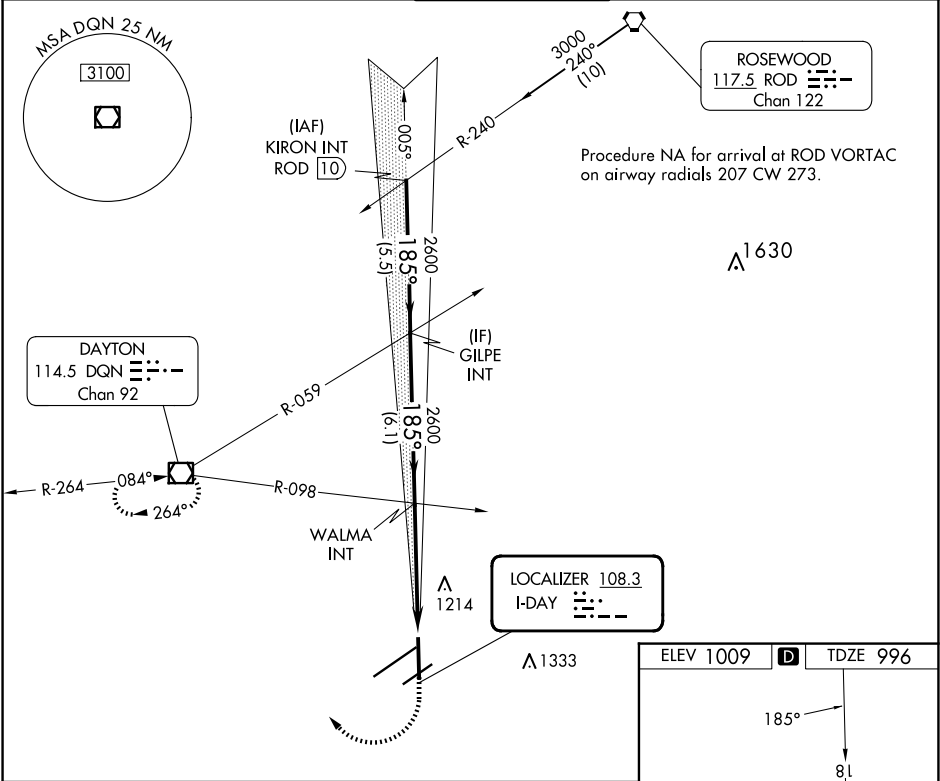


LOC I-DAY 108.3	APP CRS 185°	Rwy Idg TDZE Apt Elev 8502 996 1009
---------------------------	------------------------	---

ILS or LOC RWY 18
JAMES M COX DAYTON INTL (DAY)

<div><div>▼</div><div>For inop ALS, increase S-LOC 18 Cat C/D visibility to RVR 6000. ** RVR 1800 authorized with use of FD or AP or HUD to DA.</div></div>	<div><div>MALSR</div><div></div></div>	MISSED APPROACH: Climb to 1400 then climbing right turn to 3100 direct DQN VOR/DME and hold.
---	--	--

ATIS 125.8	COLUMBUS APP CON 134.45 323.15	DAYTON TOWER 119.9 257.7	GND CON 121.9	CINC DEL 121.75
----------------------	--	------------------------------------	-------------------------	---------------------------



	KIRON INT ROD [10]	GILPE INT	WALMA INT	1400 3100 DQN
	3000	2600	2600	
GS 3.00° TCH 55	5.5 NM	6.1 NM	4.9 NM	
CATEGORY	A	B	C	D
S-ILS 18 **	1196/24 200 (200-½)			
S-LOC 18	1400/24	404 (400-½)	1400/40	404 (400-¾)
CIRCLING	1580-1	571 (600-1)	1580-1½ 571 (600-1½)	1640-2 631 (700-2)

ELEV 1009	D	TDZE 996
HIRL all Rwys TDZ/CL Rwy 6L REIL Rwys 6R and 36		
FAF to MAP 4.9 NM		
Knots	60	90 120 150 180
Min:Seq	4:54	3:16 2:27 1:58 1:38

EC-2, 10 JUL 2025 to 07 AUG 2025

EC-2, 10 JUL 2025 to 07 AUG 2025