

LOC I-ATD 108.9	APP CRS 061°	Rwy Idg 10900 TDZE 998 Apt Elev 1009
---------------------------	------------------------	---

ILS RWY 6L (CAT II & III)
JAMES M COX DAYTON INTL (DAY)

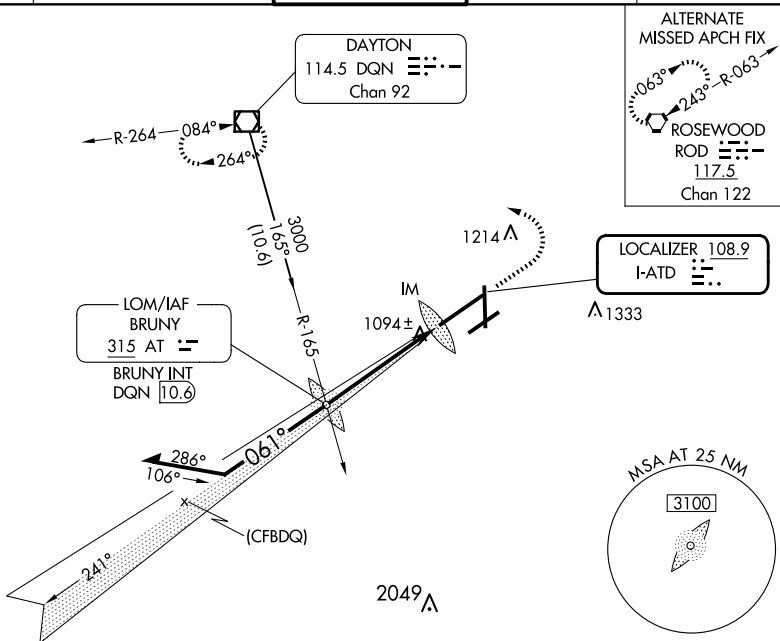
T Simultaneous approach authorized.
CAT II: RVR 1000 authorized with specific OPSPEC, MSPEC, or LOA

A approval and use of autoland or HUD to touchdown.

ALSF-2

MISSED APPROACH: Climb to 2000 then climbing left turn to 3000 direct DQN VOR/DME and hold.

ATIS 125.8	COLUMBUS APP CON 134.45 323.15	DAYTON TOWER 119.9 257.7	GND CON 121.9	CLNC DEL 121.75
---------------	-----------------------------------	-----------------------------	------------------	--------------------



Remain within 10 NM

BRUNY LOM/INT

2667

3000

241°

061°

GS 3.00°
TCH 50

2700

VGSi and ILS glidepath not coincident
(VGSi Angle 3.00°/TCH 67)

IM 1098

5 NM

967

CATEGORY	A	B	C	D
S-ILS 6L	CAT II RA 99/12 100 DA 1098			
S-ILS 6L	CAT III RVR 06			

CATEGORY II & III ILS - SPECIAL AIRCREW
& AIRCRAFT CERTIFICATION REQUIRED

HIRL all Rwy's
TDZ/CL Rwy 6L
REIL Rwy's 6R and 36