

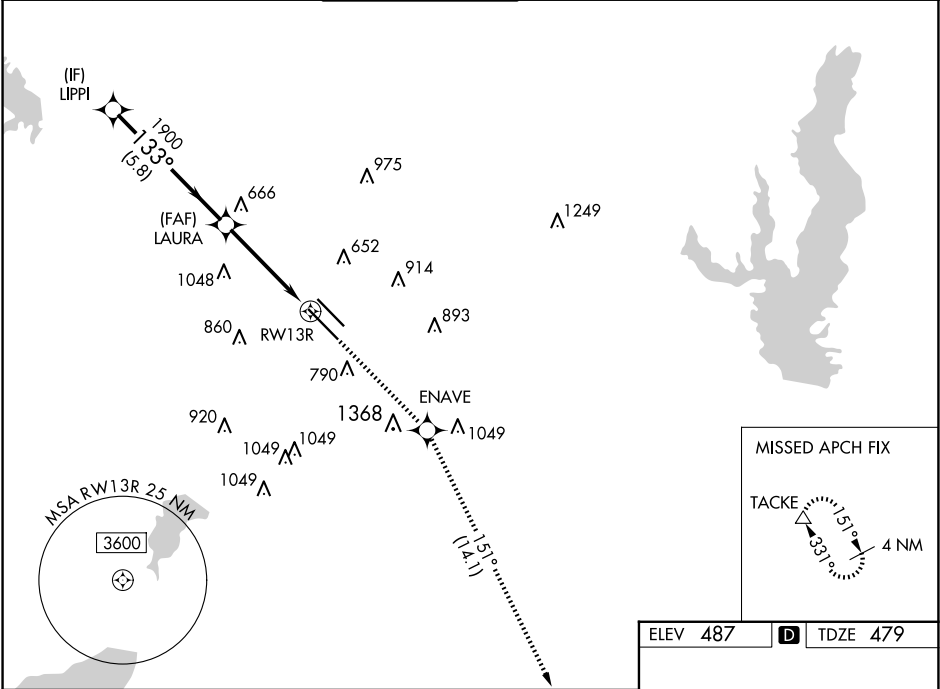
WAAS CH 82436 W13A	APP CRS 133°	Rwy Idg 8310 TDZE 479 Apt Elev 487
--	------------------------	---

RNAV (GPS) Z RWY 13R

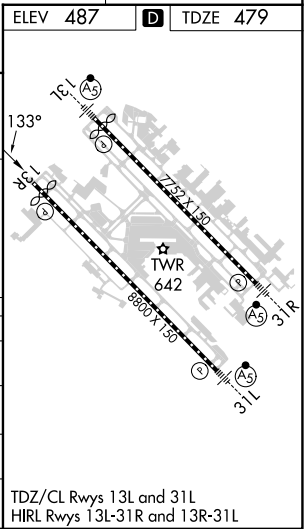
DALLAS LOVE FLD (DAL)

RNP APCH.	Simultaneous approach authorized. Use of FD or AP providing RNAV track guidance required during simultaneous operations. LNAV procedure NA during simultaneous operations. For uncompensated Baro-VNAV systems, LNAV/VNAV NA below -6°C or above 54°C.	MISSED APPROACH: Climb to 3000 direct ENAVE and on track 151° to TACKE and hold.
-----------	--	---

D-ATIS 120.15	LONE STAR APP CON NORTH 124.3 282.275 SOUTH 125.2 343.65	LOVE TOWER 123.7 239.3	GND CON 121.75 348.6	CLNC DEL 127.9	CPDLC
-------------------------	--	----------------------------------	--------------------------------	--------------------------	-------



VGSI and RNAV glidepath not coincident (VGSI Angle 3.00/TCH 52).				
LIPPI				
2500				
GP 3.00° TCH 47				
1900				
5.8 NM				
2.9 NM				
1.4				
CATEGORY	A	B	C	D
LPV DA	679/40		200 (200-¾)	
LNAV/VNAV DA	834/60		355 (400-1¼)	
LNAV MDA	980/55	501 (500-1)	980-1⅜	501 (500-1⅝)
CIRCLING	1080-1 593 (600-1)	1140-1 653 (700-1)	1220-2 733 (800-2)	1520-3 1033 (1100-3)



SC-2, 10 JUL 2025 to 07 AUG 2025

SC-2, 10 JUL 2025 to 07 AUG 2025