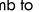
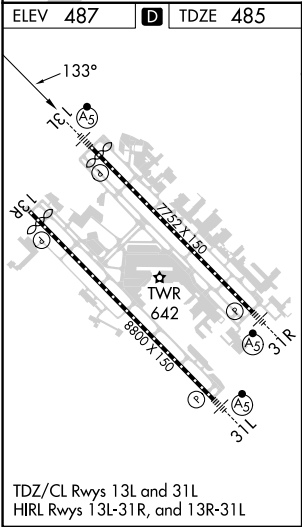
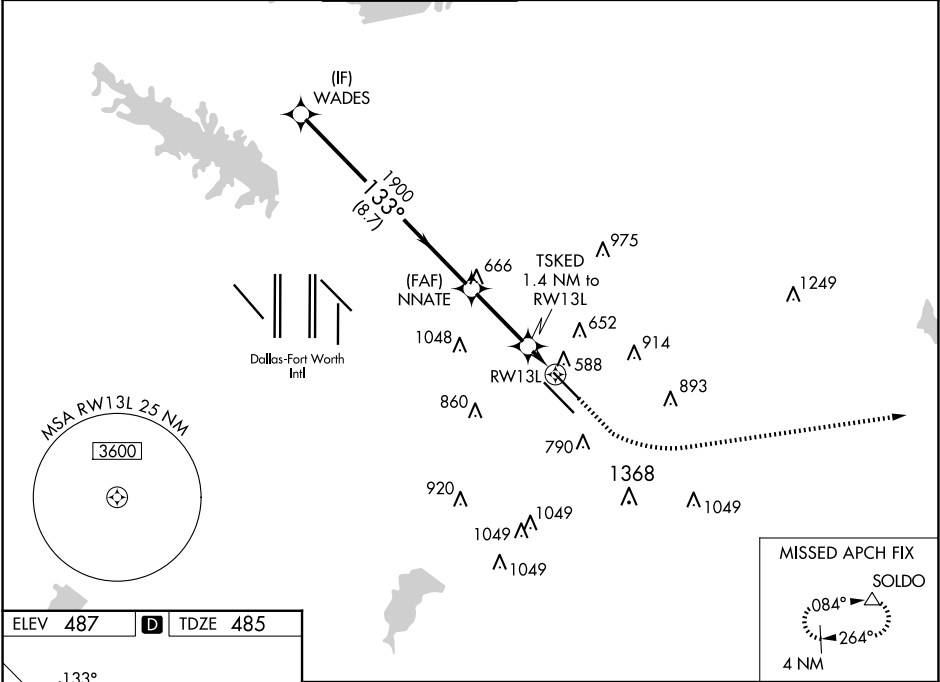


WAAS CH <b>99723</b> <b>W13B</b>	APP CRS <b>133°</b>	Rwy Idg <b>7352</b> TDZE <b>485</b> Apt Elev <b>487</b>
--	------------------------	---

RNAV (GPS) Z RWY 13L  
DALLAS LOVE FLD (DAL)

RNP APCH.					MALSR		MISSED APPROACH: Climb to 1000 then climbing left turn to 3000 direct SOLDO and hold.		
Simultaneous approach authorized. Use of FD or AP required during simultaneous operations. LNAV procedure NA during simultaneous operations. For uncompensated Baro-VNAV systems, procedure NA below -6°C or above 54°C. For inop ALS, increase LNAV/VNAV all Cats visibility to RVR 4500 and LNAV Cats C/D visibility to RVR 5500.									
D-ATIS 120.15		LONE STAR APP CON NORTH 124.3 282.275 SOUTH 125.2 343.65		LOVE TOWER 123.7 239.3		GND CON 121.75 348.6		CLNC DEL 127.9	CPDLC



WADES		NNATE		TSKED		RW13L	
2500		1900		1000		3000	
GP 3.00°		1900		1.4 NM to		SOLDO	
TCH 55		*980		RW13L		*LNAV only.	
8.7 NM		2.9 NM		1.4 NM			
CATEGORY	A	B	C	D			
LPV DA	685/18			200 (200-½)			
LNAV/VNAV DA	764/24			279 (300-½)			
LNAV MDA	840/24	355 (400-½)	840/30	355 (400-¾)			
CIRCLING	1000-1 513 (600-1)	1140-1 653 (700-1)	1220-2 733 (800-2)	1520-3 1033 (1100-3)			

SC-2, 10 JUL 2025 to 07 AUG 2025

SC-2, 10 JUL 2025 to 07 AUG 2025