

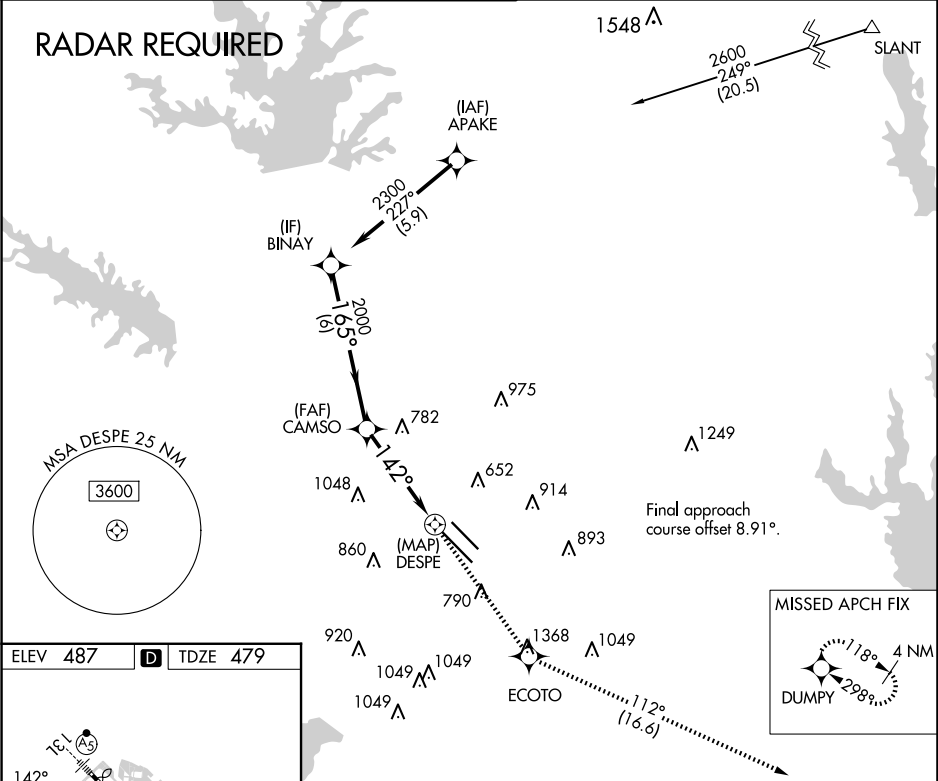
APP CRS	Rwy Idg	8310
142°	TDZE	479
	Apt Elev	487

RNAV (GPS) Y RWY 13R

DALLAS LOVE FLD (DAL)

RNP APCH.	MISSED APPROACH: Climb to 5000 direct ECOTO and on track 112° to DUMPY and hold.
-----------	--

D-ATIS	LONE STAR APP CON	LOVE TOWER	GND CON	CLNC DEL	CPDLC
120.15	NORTH 124.3 282.275 SOUTH 125.2 343.65	123.7 239.3	121.75 348.6	127.9	



ELEV	487	D	TDZE	479
------	-----	---	------	-----

