

DALLAS, TEXAS

AL-106 (FAA)

24305

APP CRS
313°

Rwy Idg	6952
TDZE	487
Apt Elev	487

RNAV (RNP) Z RWY 31R

DALLAS LOVE FLD (DAL)

RNP AR APCH.

T For uncompensated Baro-VNAV systems, procedure NA below -5°C (23°F) or above 54°C (130°F). Use of FD or AP providing RNAV track guidance required during simultaneous operations. Simultaneous approach authorized.

MALSR



MISSED APPROACH: Climb to 900 then climbing right turn to 5000 direct **FINGR** and hold.

D-ATIS
120.15

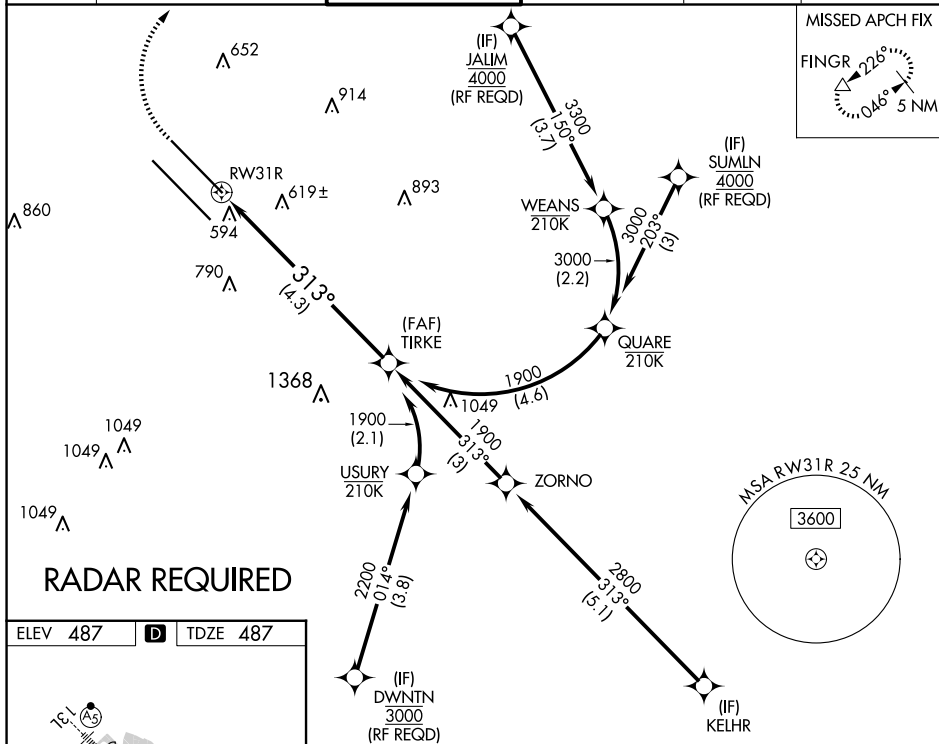
LONE STAR APP CON
NORTH **124.3 282.275**
SOUTH **125.2 343.65**

LOVE TOWER
123.7 239.3

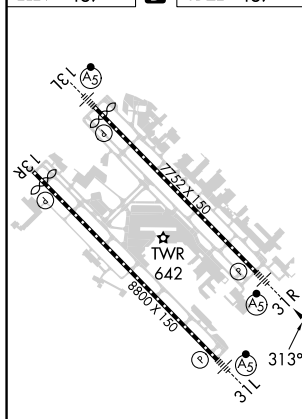
GND CON
121.75 348.6

CLNC DEL
127.9

CPDLC



ELEV 487	D	TDZE 487
----------	----------	----------



TDZ/CL Rwy 13L and 31L
HIRL Rwy 13L-31R, and 13R-31L

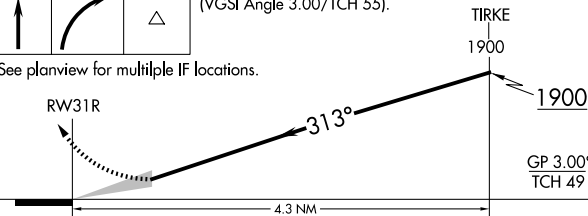
900

50

FINGR

VGSI and RNAV glidepath not coincident (VGSI Angle 3.00/TCH 55).

See planview for multiple IF locations.



CATEGORY	A	B	C	D
RNP 0.16 DA		796/24	309 (400-½)	
RNP 0.30 DA		895/45	408 (500-¾)	

AUTHORIZATION REQUIRED

DALLAS, TEXAS

Orig-C 31JAN19

DALLAS LOVE FLD (DAL)

32°51'N-96°51'W

RNAV (RNP) Z RWY 31R

SC-2, 10 JUL 2025 to 07 AUG 2025