

DALLAS, TEXAS

AL-106 (FAA)

24305

APP CRS
313°

Rwy Idg	8000
TDZE	476
Apt Elev	487

RNAV (RNP) Z RWY 31L

DALLAS LOVE FLD (DAL)

▼ For uncompensated Baro-VNAV systems, procedure NA below -5°C (23°F) or above 48°C (119°F). Simultaneous approach authorized. GPS required. Use of FD or AP providing RNAV track guidance required during simultaneous operations.

For inop MALS, increase RNP 0.30 visibility all Cats to 2½ miles.

MALSR

MISSED APPROACH: Climb to 1700 then climbing right turn to 4000 direct TADDI and hold.

D-ATIS
120.15

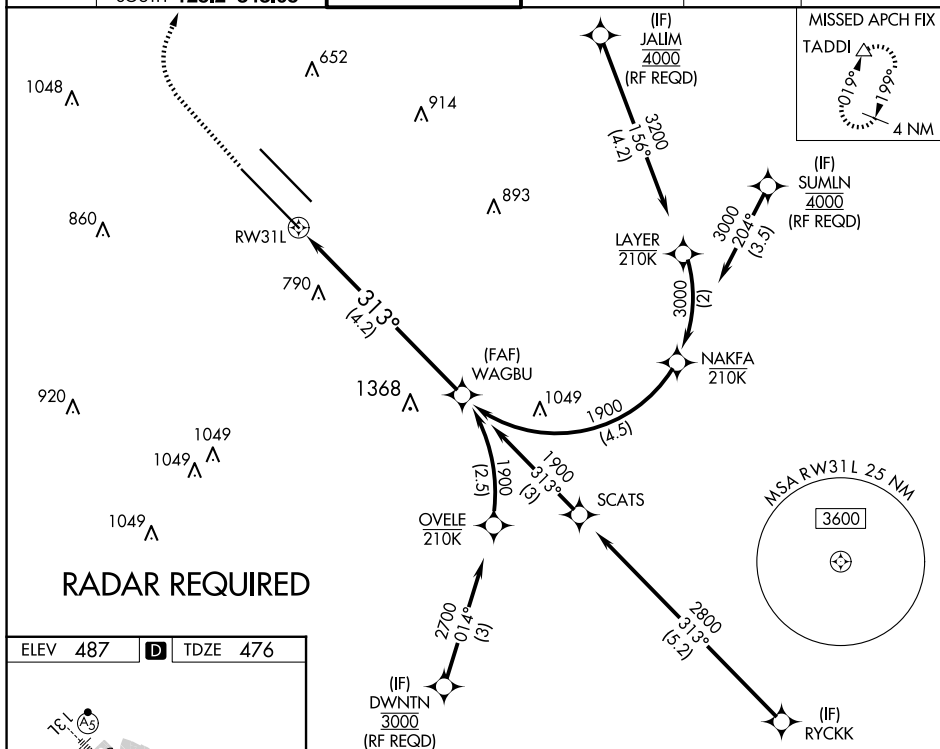
LONE STAR APP CON
NORTH **124.3 282.275**
SOUTH **125.2 343.65**

LOVE TOWER
123.7 239.3

GND CON
121 75 348 6

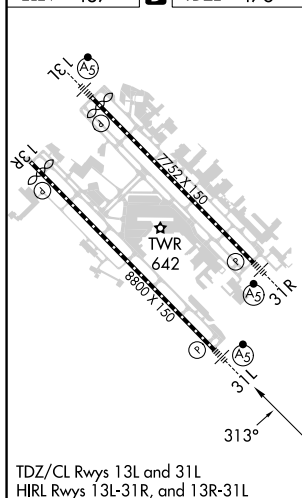
CLNC DE
127 9

CPDI C



SC-2, 10 JUL 2025 to 07 AUG 2025

ELEV 487	D	TDZE 476
----------	----------	----------



DALLAS, TEXAS
Orig-B 31MAR16

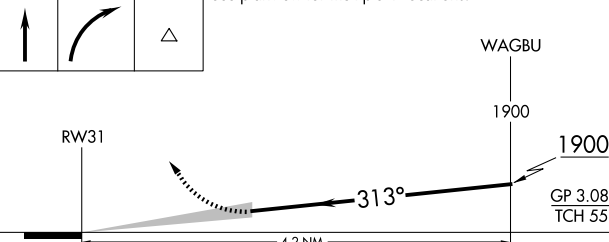
32°51'N-96°51'W

DALLAS LOVE FLD (DAL)

RNAV (RNP) Z RWY 31L

AUTHORIZATION REQUIRED

1700	4000	TADDI	See planview for multiple IF locations.
------	------	-------	---



CATEGORY	A	B	C	D
RNP 0.30 DA	1117-1 ⁵ / ₈ 641 (700-1 ⁵ / ₈)			

AUTHORIZATION REQUIRED