

APP CRS <b>133°</b>	Rwy Idg	<b>8310</b>
	TDZE	<b>478</b>
	Apt Elev	<b>487</b>

RNAV (RNP) X RWY 13R

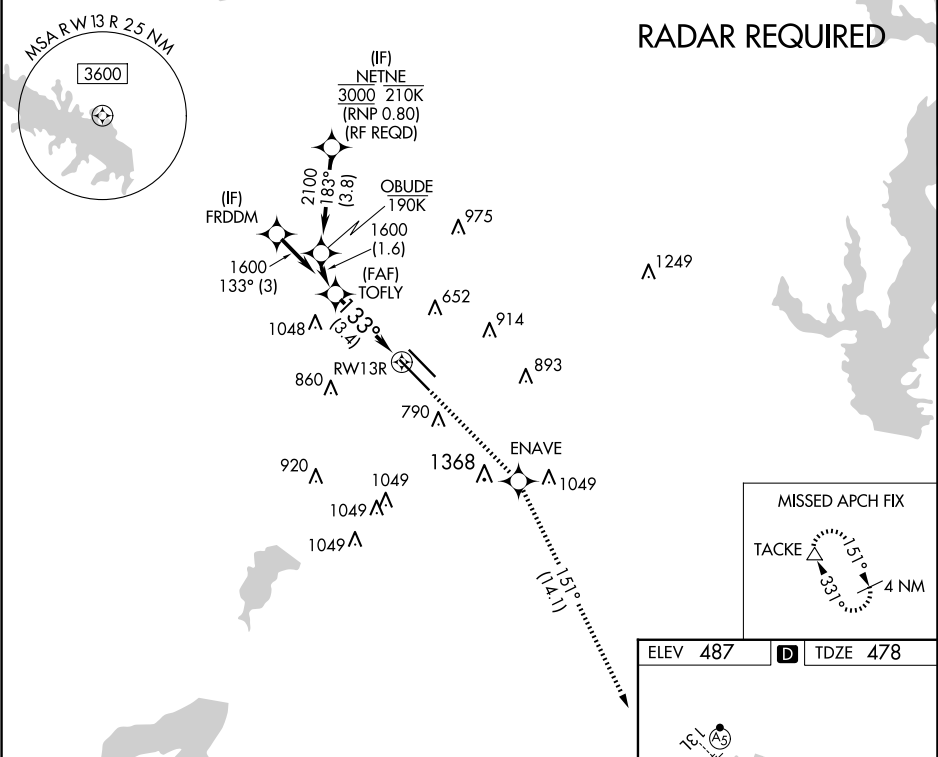
DALLAS LOVE FLD (DAL)

▼

For uncompensated Baro-VNAV systems, procedure NA below -5°C (23°F) or above 54°C (130°F). Simultaneous approach authorized. GPS required. Use of FD or AP providing RNAV track guidance required during simultaneous operations.

MISSED APPROACH: Climb to 3000 direct ENAVE and on track 151° to TACKE and hold.

D-ATIS <b>120.15</b>	LONE STAR APP CON NORTH <b>124.3 282.275</b> SOUTH <b>125.2 343.65</b>	LOVE TOWER <b>123.7 239.3</b>	GND CON <b>121.75 348.6</b>	CLNC DEL <b>127.9</b>	CPDLC
-------------------------	--	----------------------------------	--------------------------------	--------------------------	-------



MISSED APCH FIX

TACKE

151°

331°

4 NM

ELEV 487	<b>D</b>	TDZE 478
----------	----------	----------

VGSI and RNAV glidepath not coincident (VGSI Angle 3.00/TCH 52).

3000

ENAVE

tr 151°

TACKE

See planview for multiple IF locations.

TOFLY

1600

1600

133°

RWY 13R

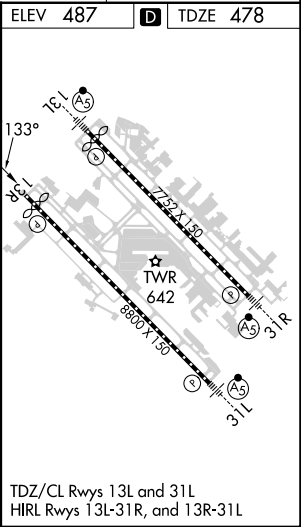
3.4 NM

GP 3.00°

TCH 48

CATEGORY	A	B	C	D
RNP 0.20 DA		781/50	303 (300-1)	
RNP 0.25 DA		833/60	355 (400-1¼)	
RNP 0.30 DA		929-1½	451 (500-1½)	

AUTHORIZATION REQUIRED



TDZ/CL Rwy 13L and 31L  
HIRL Rwy 13L-31R, and 13R-31L