

APP CRS	Rwy Idg	8310
133°	TDZE	478
	Apt Elev	487

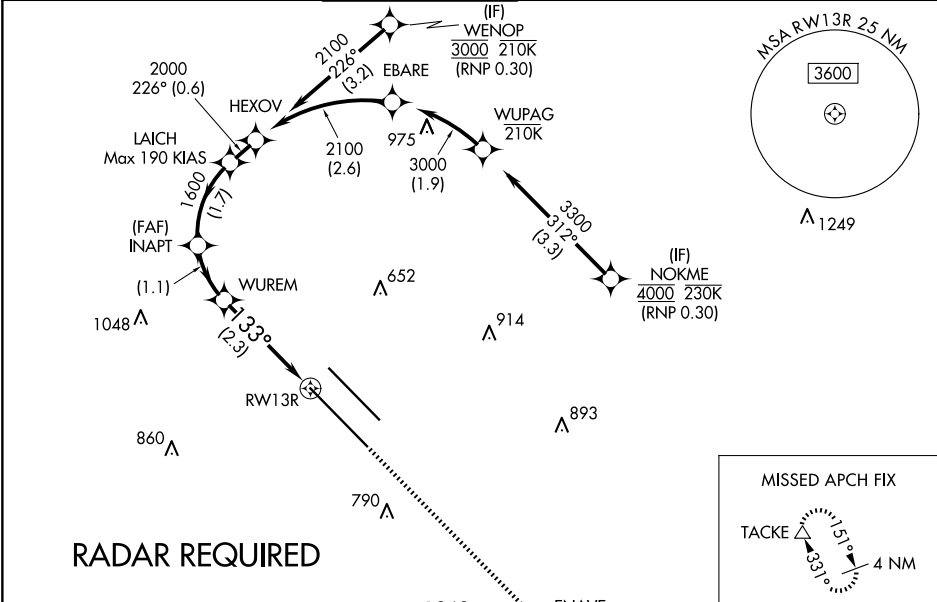
RNAV (RNP) W RWY 13R

DALLAS LOVE FLD (DAL)

⚠ For uncompensated Baro-VNAV systems, procedure NA below -5°C (23°F) or above 54°C (130°F). Simultaneous approach authorized. RF required. GPS required. Use of FD or AP providing RNAV track guidance required during simultaneous operations.

MISSED APPROACH: Climb to 3000 direct ENAVE and on track 151° to TACKE and hold.

D-ATIS	LONE STAR APP CON	LOVE TOWER	GND CON	CLNC DEL	CPDLC
120.15	NORTH 124.3 282.275 SOUTH 125.2 343.65	123.7 239.3	121.75 348.6	127.9	



ELEV 487	TDZE 478
----------	----------

VGSI and RNAV glidepath not coincident (VGSI Angle 3.00/TCH 52).

HEXOV
2100
226°
2000
GP 3.00°
TCH 48

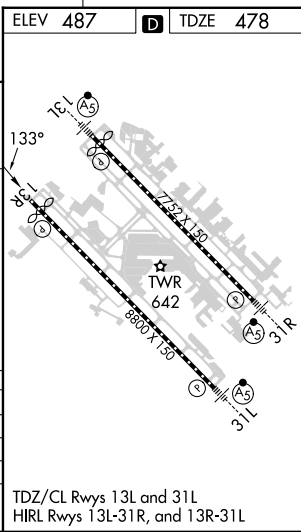
LAICH
1600
WUREM
1250
RW13R

See planview for multiple IF locations.

0.6 NM 1.7 NM 1.1 NM 2.3 NM

CATEGORY	A	B	C	D
RNP 0.20 DA		781/50	303 (300-1)	
RNP 0.25 DA		833/60	355 (400-1¼)	
RNP 0.30 DA		929-1½	451 (500-1½)	

AUTHORIZATION REQUIRED



SC-2, 10 JUL 2025 to 07 AUG 2025

SC-2, 10 JUL 2025 to 07 AUG 2025