

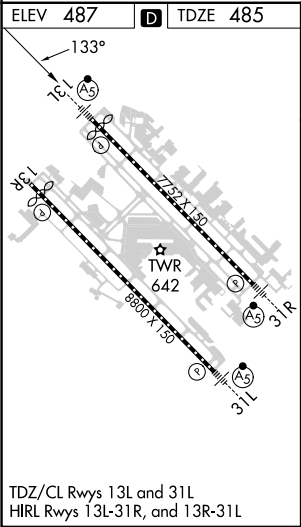
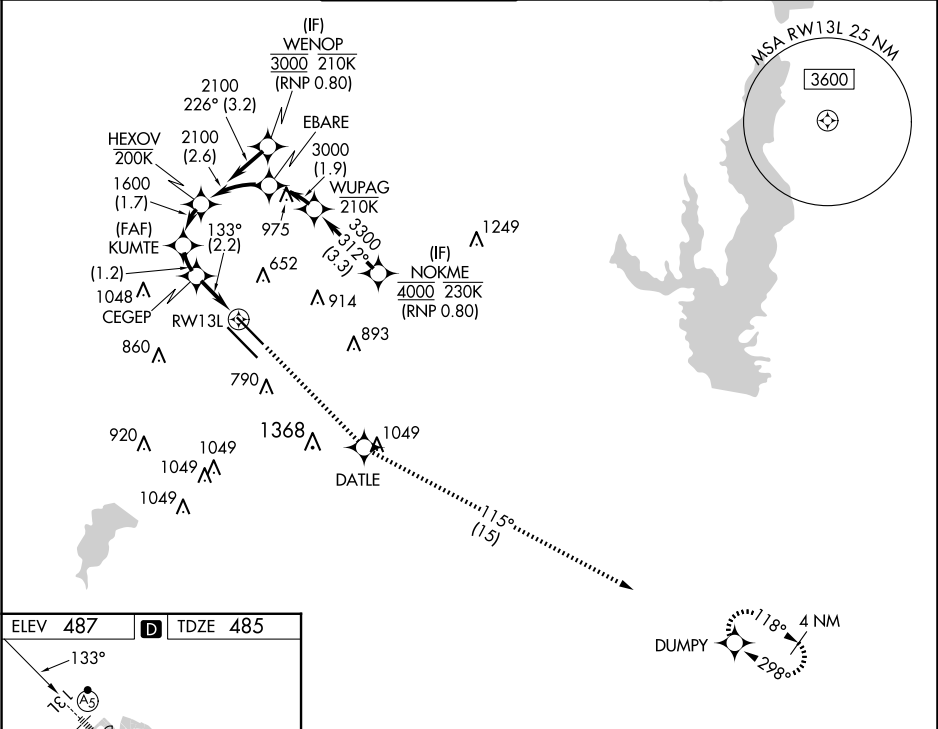
APP CRS	Rwy Idg	7352
133°	TDZE	485
	Apt Elev	487

RNAV (RNP) W RWY 13L

DALLAS LOVE FLD (DAL)

RNP AR APCH. RF required.	MALSR	MISSED APPROACH: Climb to 3000 direct DATLE and on track 115° to DUMPY and hold.
Simultaneous approach authorized. For uncompensated Baro-VNAV systems, procedure NA below -6°C or above 54°C. For inop ALS, increase RNP 0.11 all Cats visibility to RVR 4500.		

D-ATIS	LONE STAR APP CON	LOVE TOWER	GND CON	CLNC DEL	CPDLC
120.15	NORTH 124.3 282.275 SOUTH 125.2 343.65	123.7 239.3	121.75 348.6	127.9	



See planview for multiple IF locations.			
HEXOV	KUMTE	CEGEP	DUMPY
2100	1600	1212	
GP 3.00°	1600	133°	
TCH 40	1.7 NM	1.2 NM	2.2 NM
CATEGORY	A	B	C
RNP 0.11 DA	754/24	269 (300-½)	
RNP 0.30 DA	846/40	361 (400-¾)	
AUTHORIZATION REQUIRED			