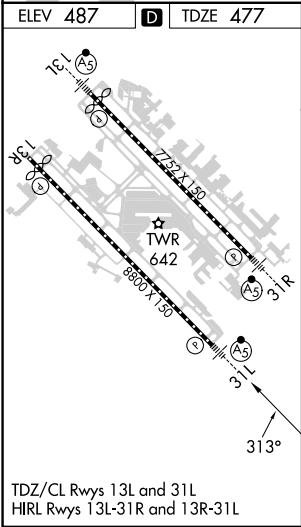
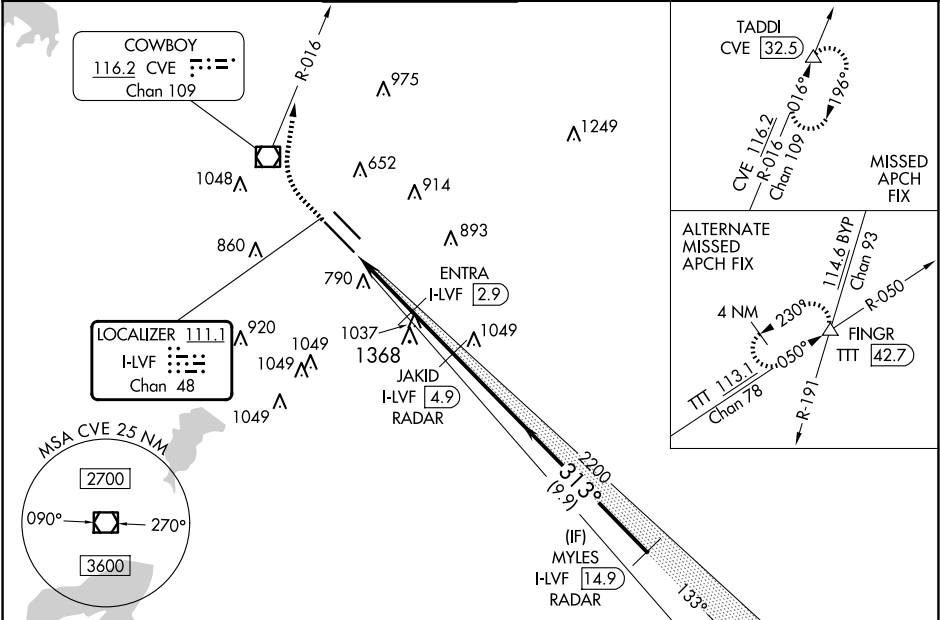


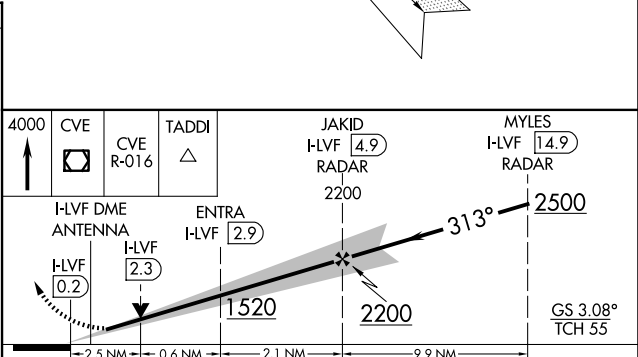



LOC/DME I-LVF <b>111.1</b> Chan <b>48</b>	APP CRS <b>313°</b>	Rwy Idg <b>8000</b> TDZE <b>477</b> Apt Elev <b>487</b>
---	------------------------	---

ILS or LOC RWY 31L  
DALLAS LOVE FLD (DAL)

DME required. RADAR required for procedure entry.	MALSR 	MISSED APPROACH: Climb to 4000 direct CVE VOR/DME and on CVE R-016 to TADDI/CVE 32.5 DME and hold.
Simultaneous approach authorized.		

D-ATIS <b>120.15</b>	LONE STAR APP CON NORTH <b>124.3 282.275</b> SOUTH <b>125.2 343.65</b>	LOVE TOWER <b>123.7 239.3</b>	GND CON <b>121.75 348.6</b>	CLNC DEL <b>127.9</b>	CPDLC
-------------------------	--	----------------------------------	--------------------------------	--------------------------	-------



				
4000	CVE 	CVE R-016	TADDI 	
I-LVF DME ANTENNA I-LVF <u>0.2</u>		ENTRA I-LVF <u>2.9</u>	JAKID I-LVF <u>4.9</u> RADAR 2200	MYLES I-LVF <u>14.9</u> RADAR 2500
1520		2200	GS 3.08° TCH 55	
2.5 NM		0.6 NM	2.1 NM	9.9 NM
CATEGORY	A	B	C	D
S-ILS 31L	677/18 200 (200-½)			
S-LOC 31L	1340/24 863 (900-½)	1340/40 863 (900-¾)	1340-2	863 (900-2)
 CIRCLING	1340-1¼	853 (900-1¼)	1340-2½ 853 (900-2½)	1520-3 1033 (1100-3)

SC-2, 10 JUL 2025 to 07 AUG 2025

SC-2, 10 JUL 2025 to 07 AUG 2025