

LOC/DME I-OVW	APP CRS	Rwy Idg	6952
<b>111.5</b>	<b>313°</b>	TDZE	<b>487</b>
Chan <b>52</b>		Apt Elev	<b>487</b>

ILS RWY 31R (SA CAT I & II)

DALLAS LOVE FLD (DAL)

RADAR required for procedure entry.

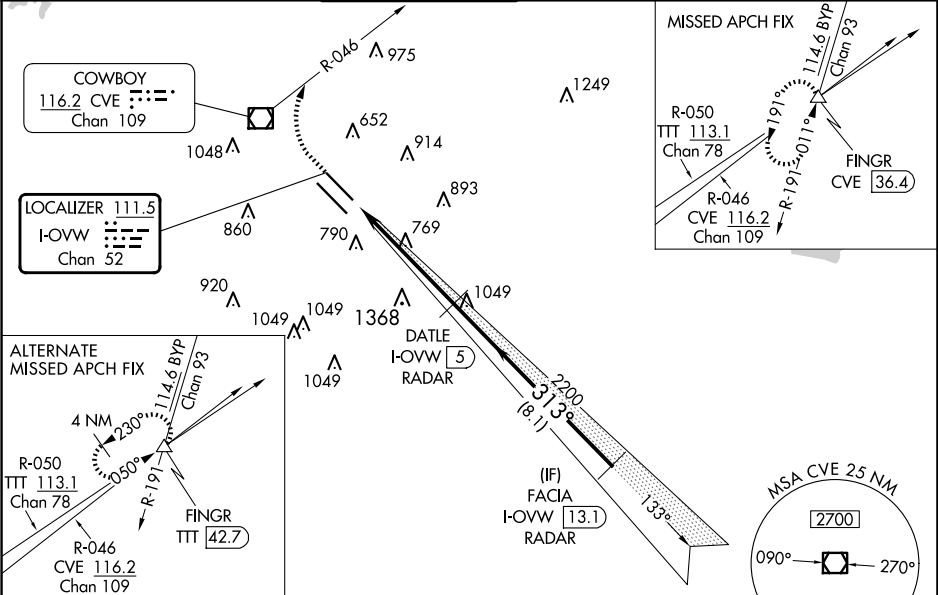
Simultaneous approach authorized.

SA CAT I/II: Requires specific OPSPEC, MSPEC or LOA approval.

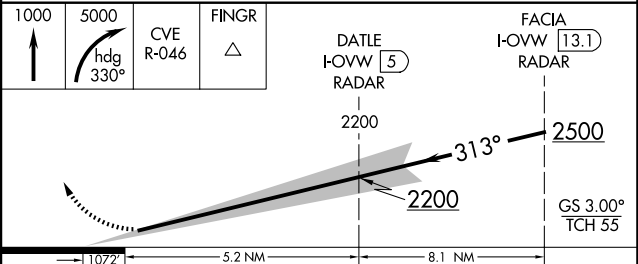
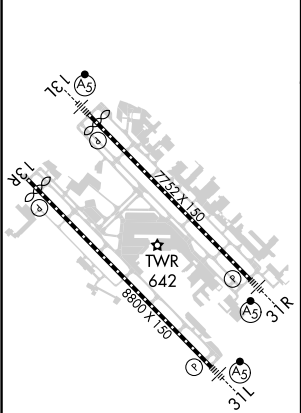
MALSR

MISSED APPROACH: Climb to 1000 then climbing right turn to 5000 on heading 330° and CVE VOR/DME R-046 to FINGR INT/CVE 36.4 DME and hold.

D-ATIS	LONE STAR APP CON	LOVE TOWER	GND CON	CLNC DEL	CPDLC
<b>120.15</b>	NORTH <b>124.3 282.275</b> SOUTH <b>125.2 343.65</b>	<b>123.7 239.3</b>	<b>121.75 348.6</b>	<b>127.9</b>	



ELEV <b>487</b>	<b>D</b>	TDZE <b>487</b>
-----------------	----------	-----------------



CATEGORY	A	B	C	D
S-ILS 31R	SA CAT I	RA 151/14	150 DA 637	
S-ILS 31R	SA CAT II	RA 98/12	100 DA 587	

SA CATEGORY I & II ILS - SPECIAL AIRCREW

& AIRCRAFT CERTIFICATION REQUIRED