

LOC/DME	I-DAL	APP CRS	Rwy Idg	7352
111.5		133°	TDZE	485
Chan 52			Apt Elev	487

ILS RWY 13L (SA CAT I & II)

DALLAS LOVE FLD (DAL)

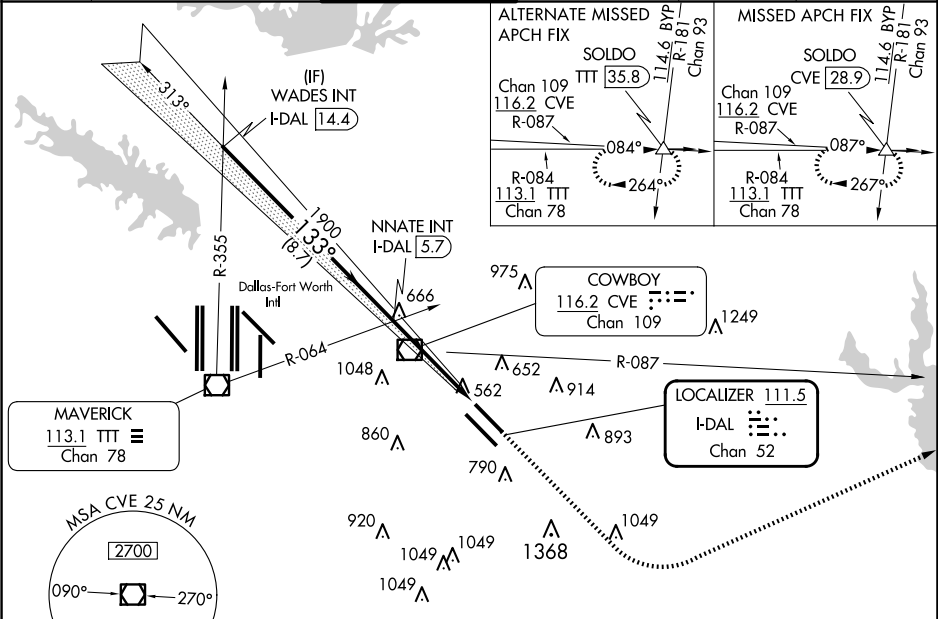
RADAR required for procedure entry.

Simultaneous approach authorized. SA CAT I: Requires specific OPSPEC, MSPEC, or LOA approval and use of HUD to DH. SA CAT II: Reduced lighting: Requires specific OPSPEC, MSPEC, or LOA approval and use of Autoland or HUD to touchdown.

MALSR

MISSED APPROACH: Climb to 1000 then climbing left turn to 3000 on heading 060° and CVE VOR/DME R-087 to SOLDLO INT/CVE 28.9 DME and hold.

D-ATIS	LONE STAR APP CON	LOVE TOWER	GND CON	CLNC DEL	CPDLC
120.15	NORTH 124.3 282.275 SOUTH 125.2 343.65	123.7 239.3	121.75 348.6	127.9	



ELEV 487

D

TDZE 485

WADES INT I-DAL 14.4

2500

GS 3.00° TCH 55

133°

1900

8.7 NM

4.3 NM

1071'

1000

3000

hdg 060°

CVE R-087

SOLDLO

CATEGORY	A	B	C	D
S-ILS 13L	SA CAT I	RA 168/14	150 DA 635	
S-ILS 13L	SA CAT II	RA 144/12	100 DA 585	

SA CATEGORY I & II ILS SPECIAL AIRCREW & AIRCRAFT CERTIFICATION REQUIRED

TDZ/CL Rwy 13L and 31L

HIRL Rwy 13L-31R, and 13R-31L

TWR 642

773X 130

2800X 130

31L