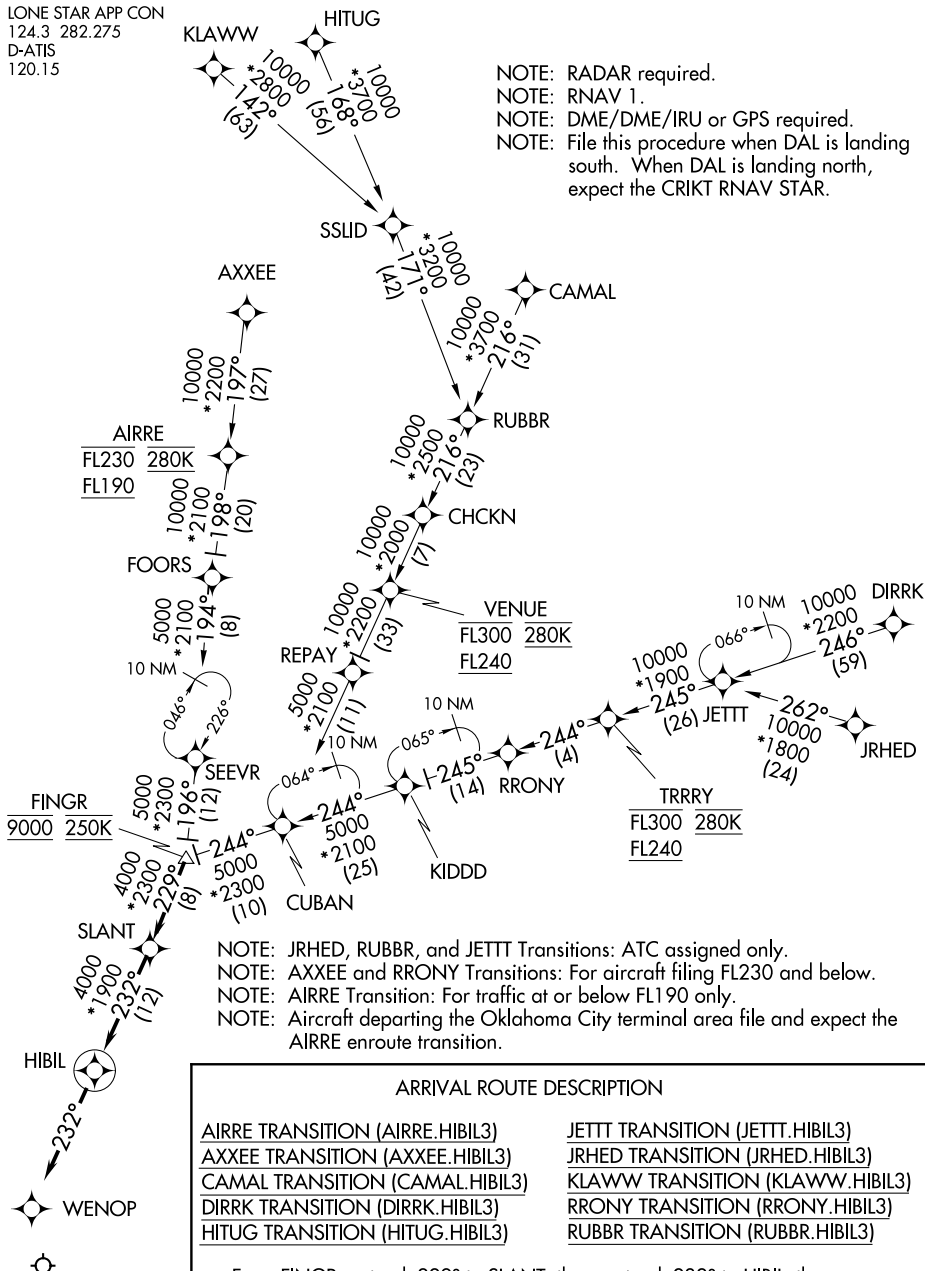


HIBIL THREE ARRIVAL (RNAV)

LONE STAR APP CON
124.3 282.275
D-ATIS
120.15

NOTE: RADAR required.
NOTE: RNAV 1.
NOTE: DME/DME/IRU or GPS required.
NOTE: File this procedure when DAL is landing south. When DAL is landing north, expect the CRIK RNAV STAR.



NOTE: Chart not to scale.

ARRIVAL ROUTE DESCRIPTION

AIRRE TRANSITION (AIRRE.HIBIL3)
 AXXEE TRANSITION (AXXEE.HIBIL3)
 CAMAL TRANSITION (CAMAL.HIBIL3)
 DIRRK TRANSITION (DIRRK.HIBIL3)
 HITUG TRANSITION (HITUG.HIBIL3)

JETT TRANSITION (JETT.HIBIL3)
JRHD TRANSITION (JRHD.HIBIL3)
KLAWW TRANSITION (KLAWW.HIBIL3)
RRONY TRANSITION (RRONY.HIBIL3)
RUBBR TRANSITION (RUBBR.HIBIL3)

From FINGR on track 229° to SLANT, then on track 232° to HIBIL, then on track 232°. Expect RADAR vectors to final approach course.

HIBIL THREE ARRIVAL (RNAV)

(FINGR.HIBIL3) 31MAR16

DALLAS, TEXAS

DALLAS LOVE FLD (DAL)

SC-2, 10 JUL 2025 to 07 AUG 2025