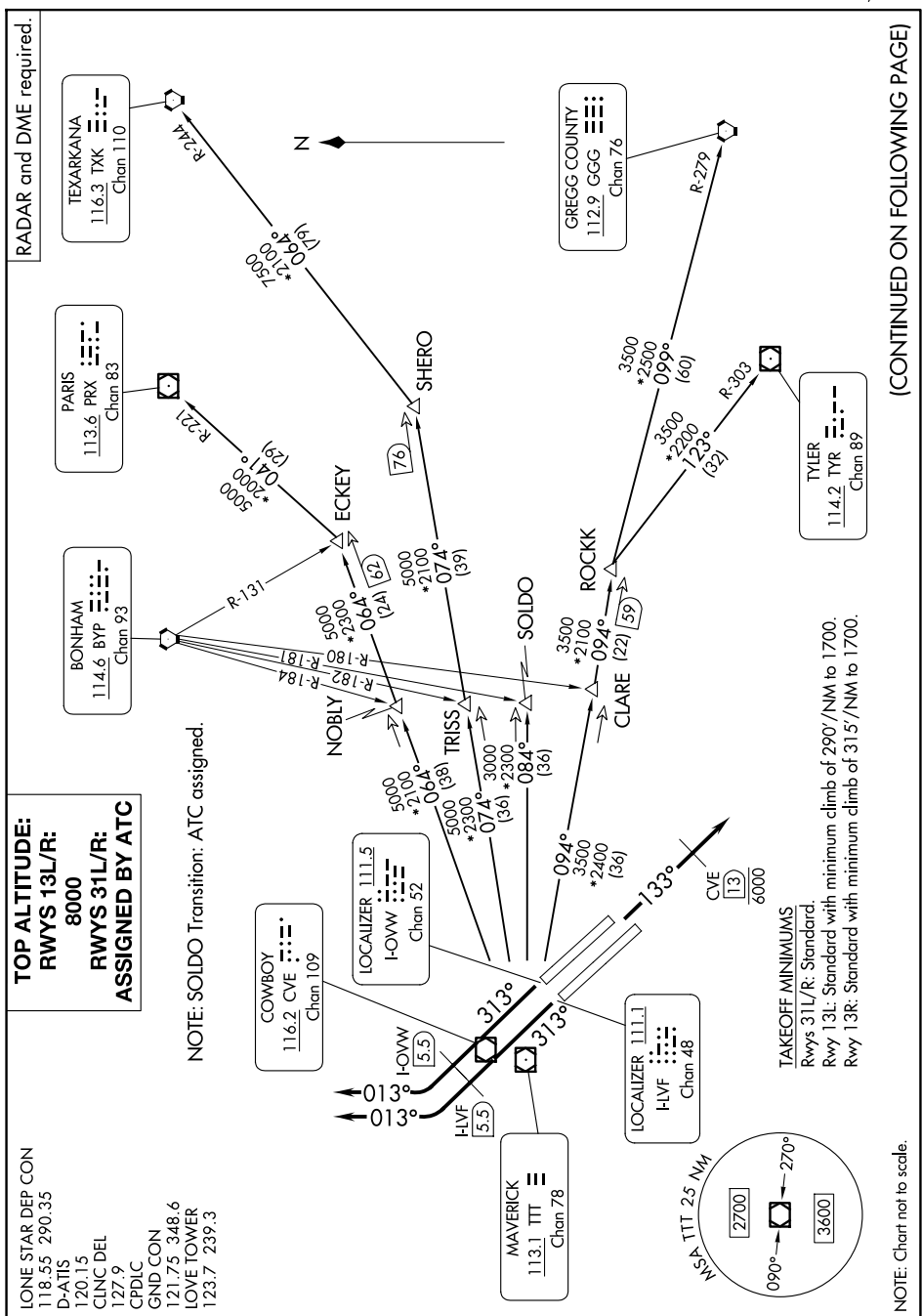


## GARLAND SIX DEPARTURE



(CONTINUED ON FOLLOWING PAGE)

SC-2, 10 JUL 2025 to 07 AUG 2025

NOTE: Chart not to scale.

**TAKEOFF MINIMUMS**  
Rwys 31L/R: Standard.  
Rwy 13L: Standard with  
Rwy 13R: Standard with

Rwys 31L/R: Standard.  
Rwy 13L: Standard with minimum climb of 290'/NM to 1700.  
Rwy 13R: Standard with minimum climb of 315'/NM to 1700.

Kwys 3 IL/K: Standard.

Rwy 13R: Standard with minimum climb of 315'/NM to 1700.

**TOP ALTITUDE:  
RWYS 13L/R:  
8000  
RWYS 31L/R:  
ASSIGNED BY ATC**

CLONE STAR DEP CON	
118.55	290.35
D-ATIS	
120.15	
CLINC DEL	
127.9	
CPDLC	
GND CON	
121.75	348.6
LOVE TOWER	
123.7	239.3

## GARLAND SIX DEPARTURE

(GARL6.TTT) 17APR25

DALLAS, TEXAS

DALLAS LOVE FLD (DAL)