

## DRYIE TWO ARRIVAL (RNAV)

SC-2, 10 JUL 2025 to 07 AUG 2025

## ARRIVAL ROUTE DESCRIPTION

BGTOE TRANSITION (BGTOE.DRYE2)

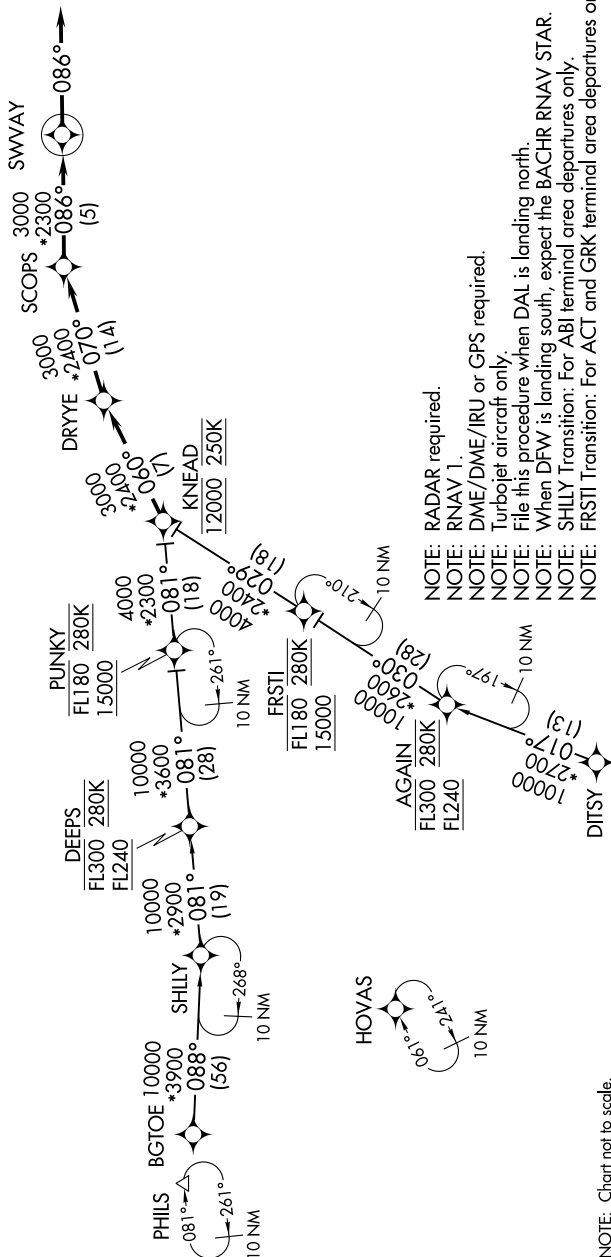
DITSY TRANSITION (DITSY.DRYE2)

FRSTI TRANSITION (FRSTI.DRYE2)

SHLLY TRANSITION (SHLLY.DRYYE2)

From KNEAD on track 060° to DRYE, then on track 070° to SCOPS, then on track 086° to SWVAY, then on track 086°. Expect RADAR vectors to final approach course.

LONE STAR APP CON  
135.975 379.9  
D-ATIS  
120.15



NOTE: Chart not to scale.

NOTE: RADAR required.  
NOTE: RNAV 1.  
NOTE: DME/DME/IRU or GPS required.  
NOTE: Turboprop aircraft only.  
NOTE: File this procedure when DAL is lost.  
NOTE: When DFW is landing south, expect  
NOTE: SHLY Transition: For ABL terminal  
NOTE: FRSTI Transition: For ACT and GR

## DRYYE TWO ARRIVAL (RNAV)

(KNEAD.DRYYE2) 22JUN17

DALLAS, TEXAS  
DALLAS LOVE FLD (DAL)

SC-2, 10 JUL 2025 to 07 AUG 2025