


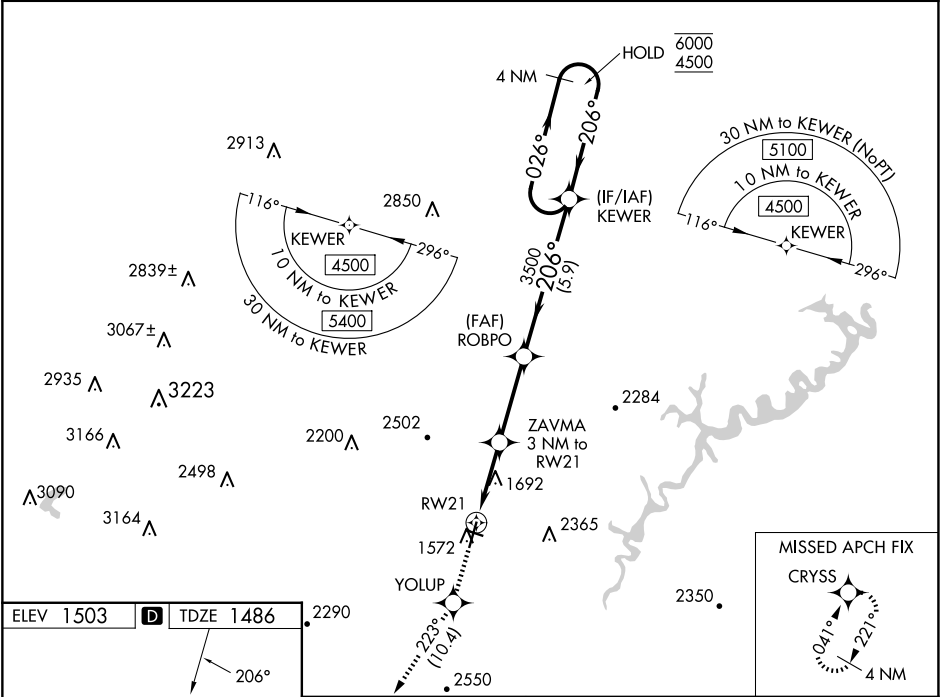
WAAS CH <b>90105</b> <b>W21A</b>	APP CRS <b>206°</b>	Rwy Idg TDZE Apt Elev	<b>5465</b> <b>1486</b> <b>1503</b>
--	------------------------	-----------------------------	---

RNAV (GPS) RWY 21

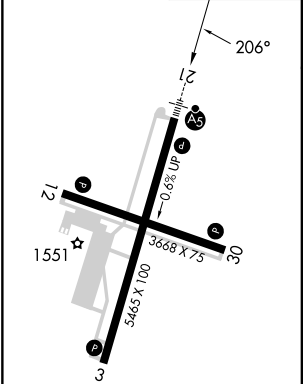
ALTOONA/BLAIR COUNTY (A00)





RNP APCH - GPS.	MALSR 	MISSED APPROACH: Climb to 5000 direct YOLUP and on track 223° to CRYSS and hold, continue climb-in-hold to 5000.
-----------------	--	--

ASOS <b>127.125</b>	JOHNSTOWN APP CON ★ <b>121.2 299.2</b>	CTAF <b>123.60</b>
------------------------	---	-----------------------



ELEV 1503	<b>D</b>	TDZE 1486
-----------	----------	-----------



5000	YOLUP	CRYSS	ROBPO	KEWER	4 NM Holding Pattern
↑		tr 223°			
			ZAVMA 3 NM to RW21		
			2 NM to RW21		
			2460	3500	
			2 NM	1 NM	3.2 NM
			5.9 NM		
CATEGORY	A	B	C	D	
LPV	DA	1977-1	491 (500-1)		
INAV/ VNAV	DA	1999-1	513 (500-1)		
INAV	MDA	2160-1/2	674 (700-1/2)	2160-1/2	674 (700-1/2)
<b>C</b> CIRCLING		2240-1	737 (800-1)	2800-3	2840-3
				1297 (1300-3)	1337 (1400-3)