

CORPUS CHRISTI, TEXAS

VOR/DME or TACAN Y RWY 31L

VORTAC CRP <u>115.5</u> Chan 102	APCH CRS 318°	Rwy Idg 8001 TDZE 17 Arpt Elev 18
--	-------------------------	--


[USN]

CORPUS CHRISTI NAS (TRUAX FLD) (KNGP)

T When local altimeter setting not received, use Corpus Christi (CRP) Inlt altimeter setting.

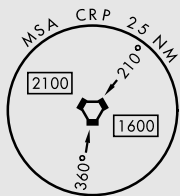
MISSED APPROACH: Climb to 600 hdg 318°, then climbing right turn to 1600 to intercept CRP VORTAC R-138 to VCCCC and hold.

ATIS ★ 127.9 290.9	APP CON 128.675 343.75	NAVY CORPUS TOWER ★ 134.85 340.2	GND CON 118.7 257.85	CLNC DEL 314.3	ASR/ PAR
-----------------------	---------------------------	-------------------------------------	-------------------------	-------------------	-------------

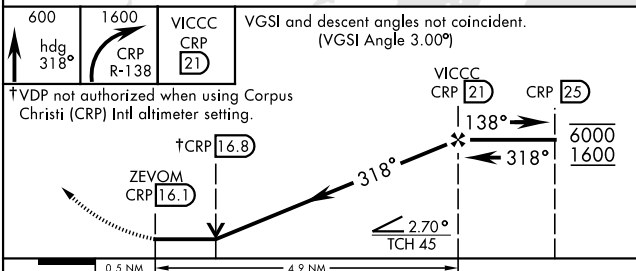
CORPUS CHRISTI
115.5 CRP 
Chan 102



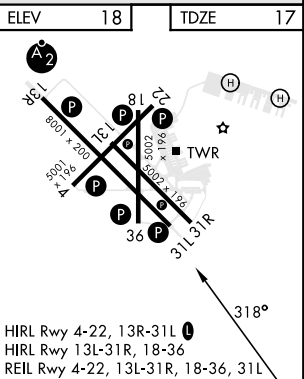
Northbound arrivals on V70-407 and V13-20-163 require turn in holding at CRP VORTAC (See L-20), or RADAR vectors. Holding at CRP not authorized for TACAN users.

$$1068^{\Delta}$$


EMERG SAFE ALT 100 NM 11,100



CATEGORY	A		B		C		D	
S-31L	420-1	403 (500-1)			420-1½	403 (500-1½)		
CIRCLING	460-1	480-1			520-1½	580-2		
	442 (500-1)	462 (500-1)			502 (600-1½)	562 (600-2)		
CORPUS CHRISTI (CRP) INTL ALTIMETER SETTING								
S-31L	440-1	423 (500-1)			440-1¼	423 (500-1¼)		
CIRCLING	500-1	482 (500-1)			540-1½	620-2		
					522 (600-1½)	602 (700-2)		



CORPUS CHRISTI, TEXAS

27°42'N-97°17'W

CORPUS CHRISTI NAS (TRUAX FLD) (KNGP)

Amdt 2 30NOV23

VOR/DME or TACAN Y RWY 31L

SC-3, 10 JUL 2025 to 07 AUG 2025

SC-3, 10 JUL 2025 to 07 AUG 2025