

VOR/DME or TACAN Y RWY 13R

VORTAC CRP 115.5 Chan 102	APCH CRS 139°	Rwy Idg TDZE Arpt Elev 8001 13 18
---------------------------------	------------------	--

[USN]

CORPUS CHRISTI NAS (TRUAX FLD) (KNGP)

▼ * When ALS inop, increase CAT AB vis to 1 mile, CAT CD vis to 1½ miles. ** When ALS inop, increase CAT AB vis to 1 mile, CAT CD vis to 1½ miles.	SALSF A2	MISSED APPROACH: Climb to 1600 on CRP VORTAC R-138 to VICCC and hold.
---	-------------	---

ATIS ★ 127.9 290.9	APP CON 128.675 343.75	NAVY CORPUS TOWER ★ 134.85 340.2	GND CON 118.7 257.85	CLNC DEL 314.3	ASR/ PAR
-----------------------	---------------------------	-------------------------------------	-------------------------	-------------------	----------

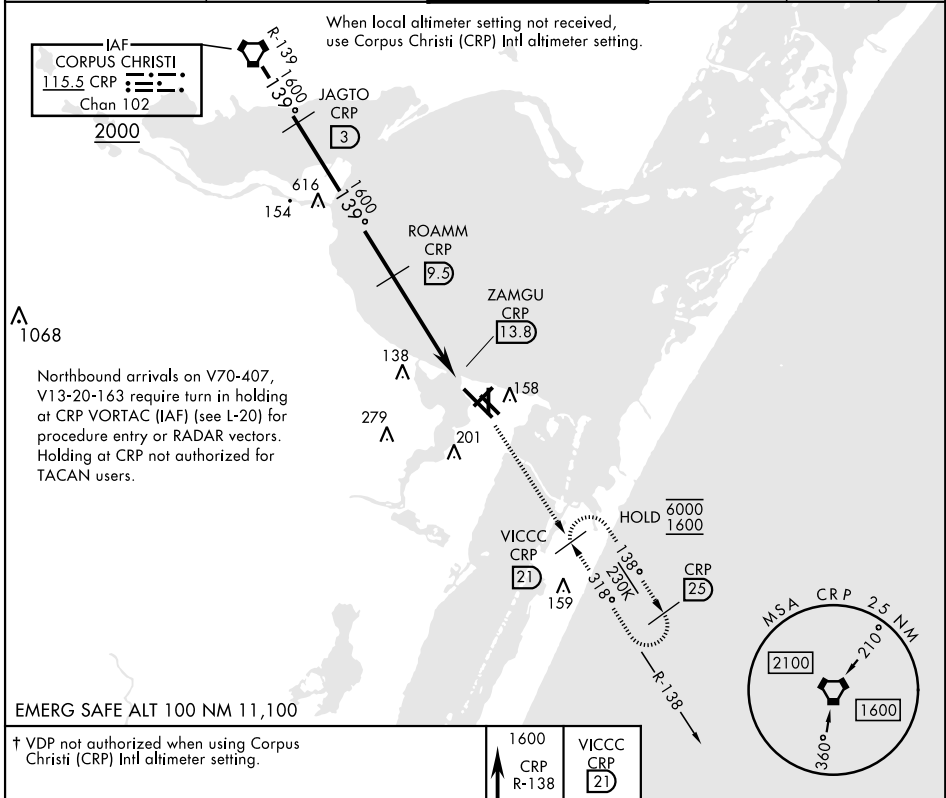
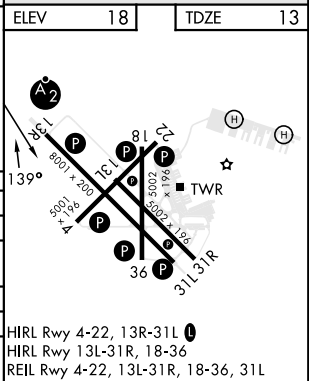


Diagram illustrating a flight path and altimeter settings for S-13R aircraft. The path starts at VORTAC 2000, proceeds 139° for 1600 feet to JAGTO CRP 3, then 1600 feet to ROAMM CRP 9.5, and finally 3.01° for 4.3 NM to ZAMGU CRP 13.8. A 0.5 NM segment is shown after ZAMGU.

CATEGORY	A	B	C	D
S-13R *	420-¾ 407 (500-¾)	480-1	420-1 407 (500-1)	580-2
CIRCLING	442 (500-1)	462 (500-1)	502 (600-1½)	562 (600-2)
CORPUS CHRISTI (CRP) INTL ALTIMETER SETTING				
S-13R **	460-¾ 447 (500-1¾)	540-1½	460-1 447 (500-1)	620-2
CIRCLING	500-1 482 (500-1)	522 (600-1½)	602 (700-2)	



VOR/DME or TACAN Y RWY 13R