

TACAN Z RWY 31L

TACAN NGP Chan 87	APCH CRS 291°	Rwy Idg 8001 TDZE 17 Arpt Elev 18
-----------------------------	-------------------------	--

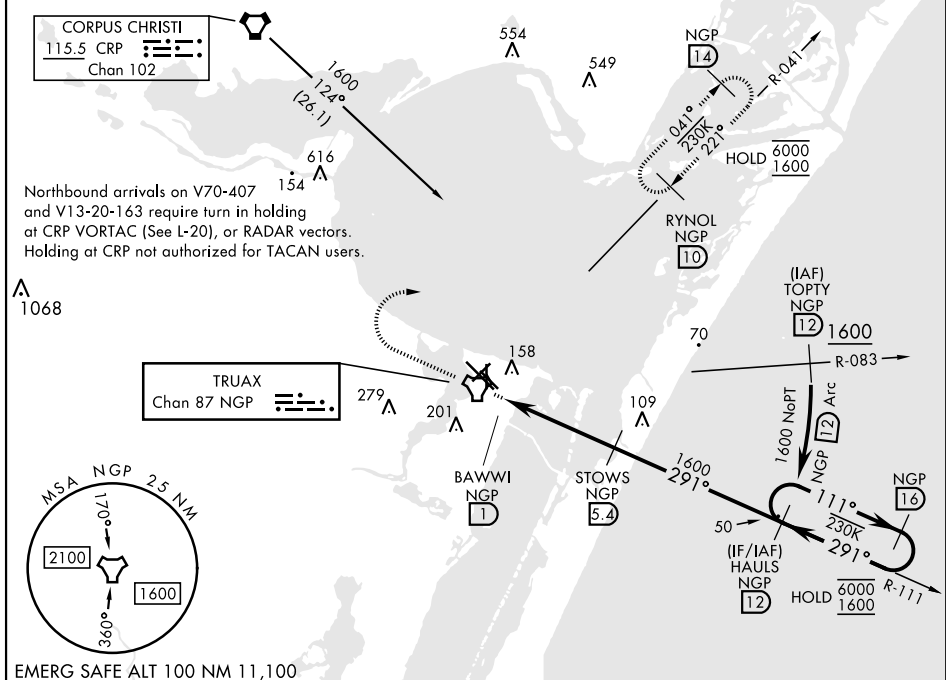
[USN]

CORPUS CHRISTI NAS (TRUAX FLD) (KNGP)



T When local altimeter setting not received, use Corpus Christi (CRP) Intl altimeter setting.

MISSED APPROACH: Climb to 1600 direct NGP TACAN and turn right to intercept R-041 to RYNOL and hold.

ATIS ★ 127.9 290.9	APP CON 128.675 343.75	NAVY CORPUS TOWER ★ 134.85 0 340.2	GND CON 118.7 257.85	CLNC DEL 314.3	ASR/ PAR
-----------------------	---------------------------	---------------------------------------	-------------------------	-------------------	-------------

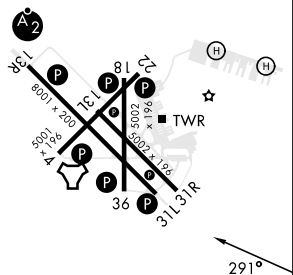
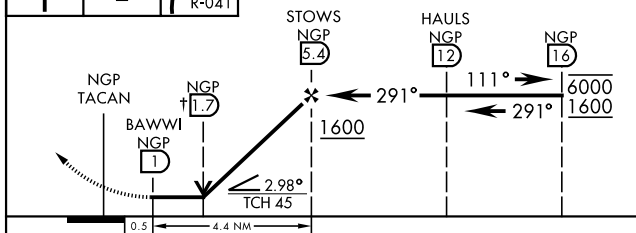


SC-3, 10 JUL 2025 to 07 AUG 2025

1600 ↑	NGP 	 NGP R-041
-----------	--	---

†VDP not authorized when using Corpus Christi (CRP) Intl altimeter setting.

ELEV	18		TDZE	17
------	----	--	------	----



CATEGORY	A	B	C	D
S-31L	420-1 403	(500-1)	420-1½ 403	(500-1½)
C CIRCLING	460-1 442	480-1 462	520-1½ 502	580-2 562
	(500-1)	(500-1)	(600-1½)	(600-2)
CORPUS CHRISTI (CRP) INTL ALTIMETER SETTING				
S-31L	460-1 443	(500-1)	460-1¾ 443	(500-1¾)
C CIRCLING	500-1 482	(500-1)	540-1½ 522	620-2 602
			(600-1½)	(700-2)

HIRL Rwy 4-22, 13R-31L **L**
HIRL Rwy 13L-31R, 18-36
REIL Rwy 4-22, 13L-31R, 18-36, 31L

CORPUS CHRISTI, TEXAS

27°42'N-97°17'W

CORPUS CHRISTI NAS (TRUAX FLD) (KNGP)

Amdt 2 30NOV23

TACAN Z RWY 31L