

TACAN X RWY 31L

TACAN NGP Chan 87	APCH CRS 291°	Rwy Idg 8001 TDZE 17 Arpt Elev 18
-----------------------------	-------------------------	--

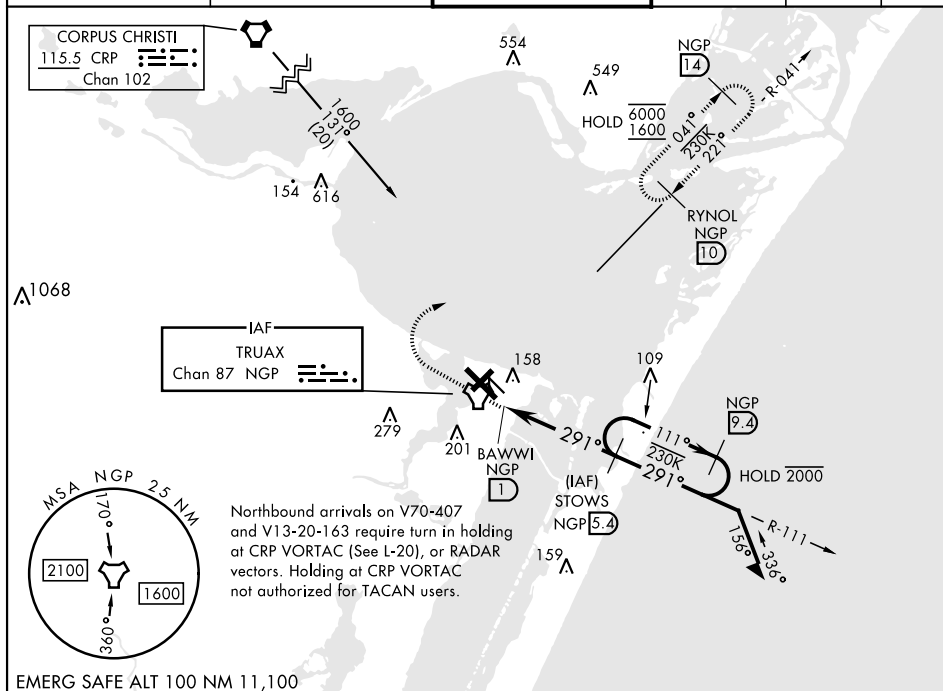
[USN]

CORPUS CHRISTI NAS (TRUAX FLD) (KNGP)

T When local altimeter setting not received, use Corpus Christi (CRP) Intl altimeter setting.

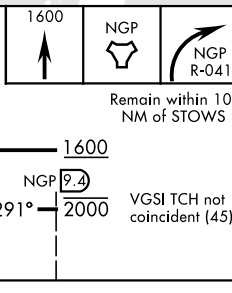
MISSED APPROACH: Climb to 1600 direct NGP TACAN and turn right to intercept R-041 to RYNOL and hold.

<p>ATIS ★</p> <p>127.9 290.9</p>	<p>APP CON</p> <p>128.675 343.75</p>	<p>NAVY CORPUS TOWER ★</p> <p>134.850 340.2</p>	<p>GND CON</p> <p>118.7 257.85</p>	<p>CLNC DEL</p> <p>314.3</p>	<p>ASR/ PAR</p>
----------------------------------	--------------------------------------	---	------------------------------------	------------------------------	---------------------

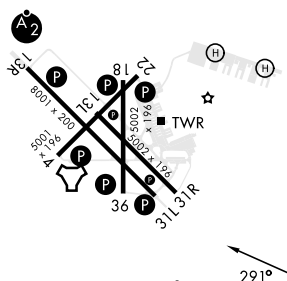


EMERG SAFE ALT 100 NM 11.100

† VDP not authorized when using Corpus Christi (CRP) Intl altimeter setting.



ELEV	18		TDZE	17
------	----	--	------	----



CATEGORY	A	B	C	D
S-31L	420-1 403	(500-1)	420-1½ 403	(500-1½)
CIRCLING	460-1 442 (500-1)	480-1 462 (500-1)	520-1½ 502 (600-1½)	580-2 562 (600-2)
CORPUS CHRISTI (CRP) INTL ALTIMETER SETTING				
S-31L	460-1 443	(500-1)	460-1¾ 443	(500-1¾)
CIRCLING	500-1 482 (500-1)		540-1½ 522 (600-1½)	620-2 602 (700-2)

HIRL Rwy 4-22, 13R-31L **L**
HIRL Rwy 13L-31R, 18-36
REIL Rwy 4-22, 13L-31R, 18-36, 31L

FAF to MAP 4.4 NM					
Knots	60	90	120	150	180
Min:Sec	4:24	2:56	2:12	1:46	1:28