

TACAN RWY 36

TACAN NGP Chan <b>87</b>	APCH CRS <b>327°</b>	Rwy Idg <b>5002</b> TDZE <b>18</b> Arpt Elev <b>18</b>
-----------------------------	-------------------------	--

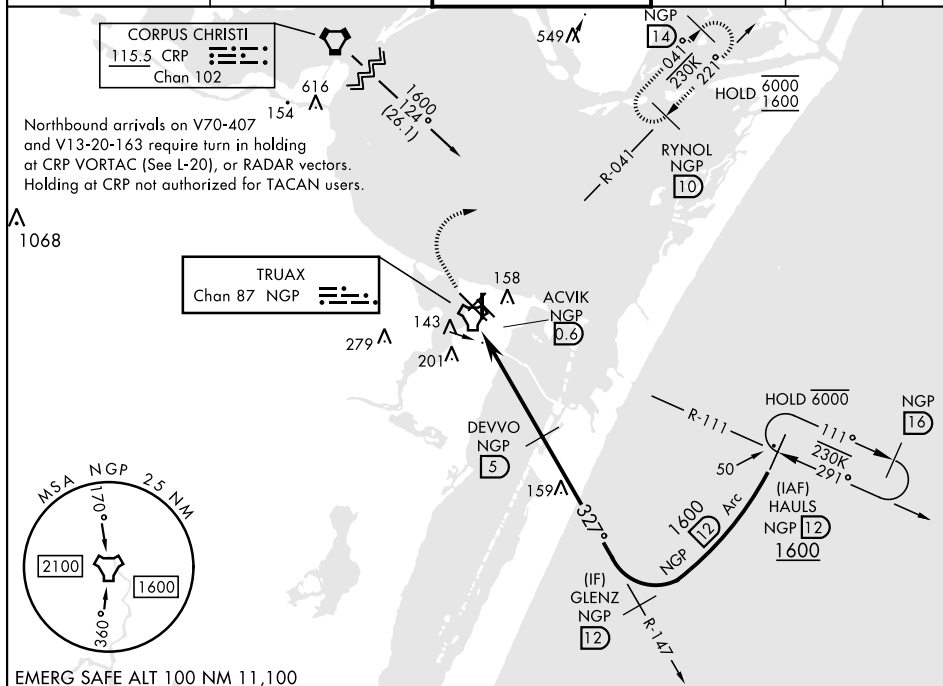
[USN]

CORPUS CHRISTI NAS (TRUAX FLD) (KNGP)

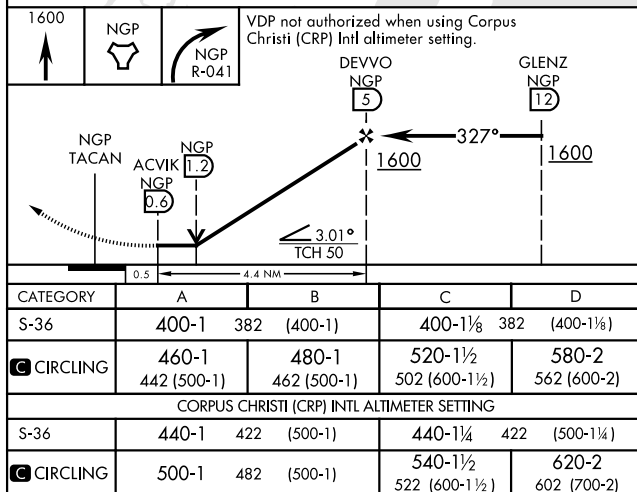
**T** When local altimeter setting not received, use Corpus Christi (CRP) Intl altimeter setting.

**MISSED APPROACH:** Climb to 1600 direct NGP TACAN and turn right to intercept R-041 to RYNOL and hold.

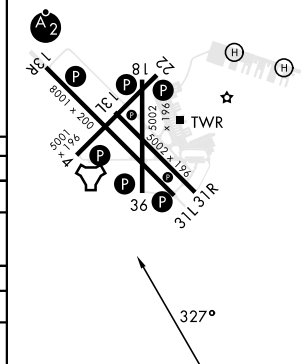
ATIS ★ 127.9 290.9	APP CON 128.675 343.75	NAVY CORPUS TOWER ★ 134.85 0 340.2	GND CON 118.7 257.85	CLNC DEL 314.3	ASR/ PAR
-----------------------	---------------------------	---------------------------------------	-------------------------	-------------------	-------------



EMERG SAFE ALT 100 NM 11,100



ELEV	18	TDZE	18
HIRL Rwy 4-22, 13R-31L <b>L</b>			
HIRL Rwy 13L-31R, 18-36			
REIL Rwy 4-22, 13L-31R, 18-36, 31L			



CORPUS CHRISTI, TEXAS

27°42'N-97°17'W

CORPUS CHRISTI NAS (TRUAX FLD) (KNGP)

Amdt 2 30NOV23

TACAN RWY 36

SC-3, 10 JUL 2025 to 07 AUG 2025