

TACAN RWY 18

TACAN NGP Chan 87	APCH CRS 192°	Rwy Idg 5002 TDZE 18 Arpt Elev 18
-----------------------------	-------------------------	--

[USN]

CORPUS CHRISTI NAS (TRUAX FLD) (KNGP)

T When local altimeter setting not received, use Corpus Christi (CRP) Intl altimeter setting.

MISSED APPROACH: Climb to 1600 direct NGP TACAN and turn left to intercept R-041 to RYNOL and hold.

ATIS ★ 127.9 290.9	APP CON 128.675 343.75	NAVY CORPUS TOWER ★ 134.85 0 340.2	GND CON 118.7 257.85	CLNC DEL 314.3	ASR/ PAR
-----------------------	---------------------------	---------------------------------------	-------------------------	-------------------	-------------


CORPUS CHRISTI
115.5 CRP
Chan 102

(Turn in holding at RYNOL
required for procedure entry.)

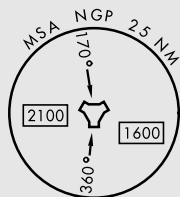
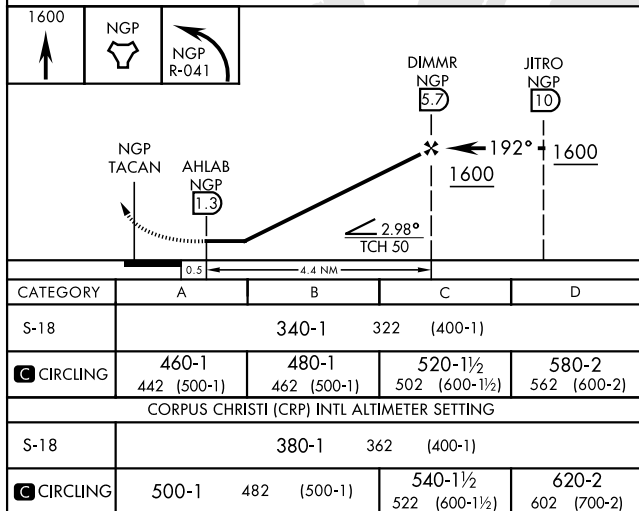
Northbound arrivals on V70-407 and V13-20-163 require turn in holding at CRP VORTAC (See L-20), or RADAR vectors. Holding at CRP not authorized for TACAN users.

CAUTION:
Intermediate segment
length 4.3 NM, less than
CAT AB 5.0 NM
CAT CD 6.0 NM.

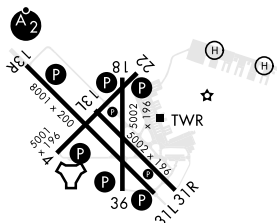
A1068

TRUAX
Chan 87 NGP 

EMERG SAFE ALT 100 NM 11,100



ELEV	18	/	TDZE	18
------	----	---	------	----



HIRL Rwy 4-22, 13R-31L
HIRL Rwy 13L-31R, 18-36
REIL Rwy 4-22, 13L-31R, 18-36, 31L

CORPUS CHRISTI, TEXAS

27°42'N-97°17'W

CORPUS CHRISTI NAS (TRUAX FLD) (KNGP)

Amdt 2 30NOV23

TACAN RWY 18

SC-3, 10 JUL 2025 to 07 AUG 2025

SC-3, 10 JUL 2025 to 07 AUG 2025