

RNAV (GPS) RWY 4

APCH CRS	Rwy Idg	5001
042°	TDZE	17
	Arpt Elev	18

[USN]

CORPUS CHRISTI NAS (TRUAX FLD) (KNGP)

RNP APCH

T For uncompensated Baro-VNAV systems, LNAV/VNAV NA below -15°C (5°F) or above 54°C (129°F)

MISSED APPROACH: Climb to 2000 direct
FOLEM and hold.

ATIS ★

127.9 290.9

APP CON

128.675 343.75

NAVY CORPUS TOWER ★

134.85 L 340.2

GND CC

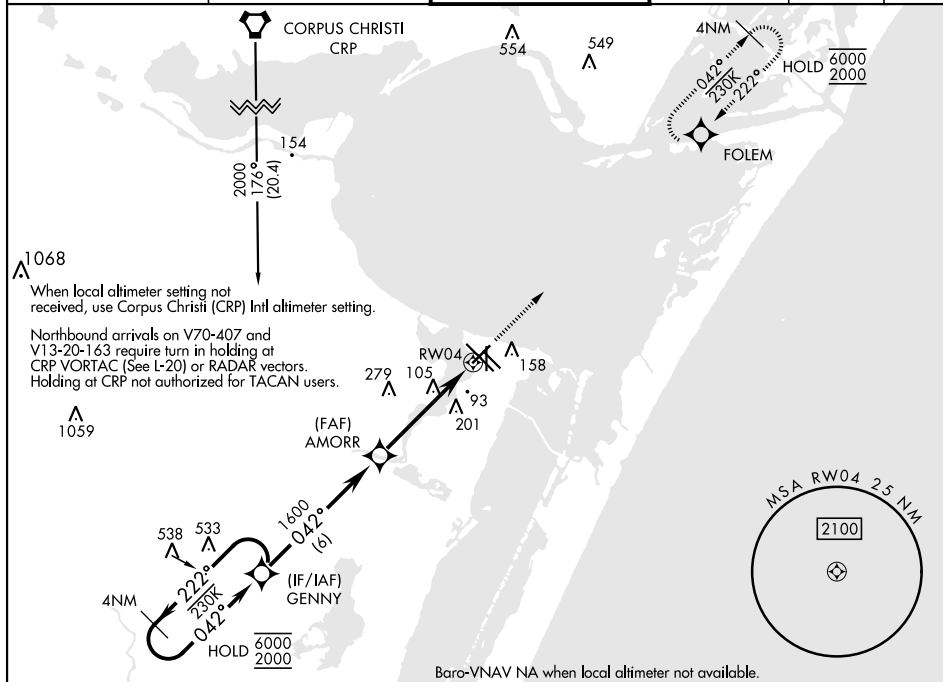
118.7 257.85

CLNC DEL

314.3

ASRA

PAR

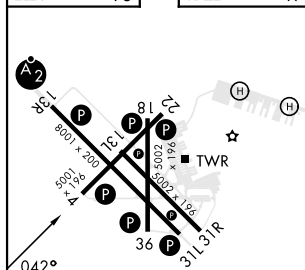


Baro-VNAV NA when local altimeter not available.

EMERG SAFE ALT 100 NM 11,100

FIFV	18
------	----

TDZE	17
------	----



HIRL Rwy 4-22, 13R-31L **L**
HIRL Rwy 13L-31R, 18-36
REIL Rwy 4-22, 13L-31R, 18-36, 31L

4 NM Holding Pattern GENNY

VDP not authorized when using Corpus Christi (CRP) Inlt altimeter setting.

2000

FOLEO

6000
2000

222°

042°

042°

1600

1 NM to RW04

RW04

4.8 NM

GP 3.00 °
TCH 50

CATEGORY	A	B	C	D
RNAV/VNAV DA	267-¾	250	(300-¾)	
RNAV MDA	400-1	383 (400-1)	400-1½	383 (400-1½)
CIRCLING	460-1 442 (500-1)	480-1 462 (500-1)	520-1½ 502 (600-1½)	580-2 562 (600-2)

CORPUS CHRISTI (CRP) Inlt ALTIMETER SETTING

RNAV MDA	420-1	403 (500-1)	420-1½	403 (500-1½)
CIRCLING	500-1	482 (500-1)	540-1½ 522 (600-1½)	620-2 602 (700-2)

CORPUS CHRISTI, TEXAS

27°42'N-97°17'W

CORPUS CHRISTI NAS (TRUAX FLD) (KNGP)

Amdt 2 30NOV23

RNAV (GPS) RWY 4

SC-3, 10 JUL 2025 to 07 AUG 2025

SC-3, 10 JUL 2025 to 07 AUG 2025