

RNAV (GPS) RWY 36

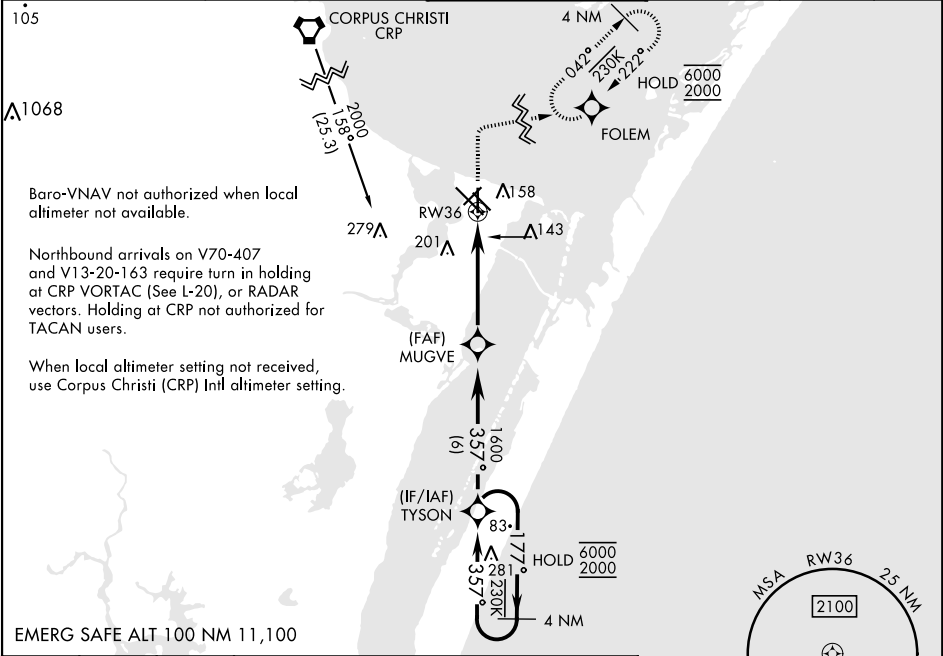
APCH CRS 357°	Rwy Idg TDZE Arpt Elev	5002 18 18
------------------	------------------------------	------------------

[USN]

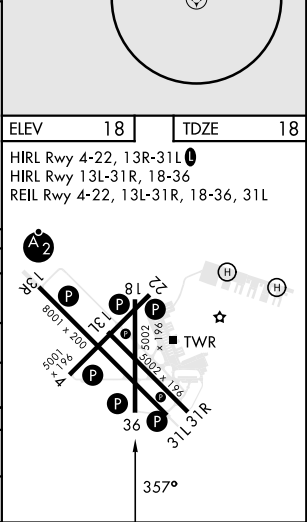
CORPUS CHRISTI NAS (TRUAX FLD) (KNGP)

RNP APCH	MISSED APPROACH: Climb to 600, then climbing right turn to 2000 direct FOLEM and hold.
▼ For uncompensated Baro-VNAV systems, LNAV/VNAV NA below -15° C (5° F) or above 54° C (129° F).	

ATIS ★ 127.9 290.9	APP CON 128.675 343.75	NAVY CORPUS TOWER ★ 134.85 0 340.2	GND CON 118.7 257.85	CLNC DEL 314.3	ASR/ PAR
-----------------------	---------------------------	---------------------------------------	-------------------------	-------------------	-------------



EMERG SAFE ALT 100 NM 11,100	600 ↑	2000 ↪	FOLEM ⊙	VDP not authorized when using Corpus Christi (CRP) Intl altimeter setting.	4 NM Holding Pattern
CATEGORY	A	B	C	D	
LNAV MDA	400-1	382 (400-1)	400-1½	382 (400-1½)	
LNAV/VNAV DA	400-1½		382 (400-1½)		
CIRCLING	460-1 442 (500-1)	480-1 462 (500-1)	520-1½ 502 (600-1½)	580-2 562 (600-2)	
CORPUS CHRISTI (CRP) INTL ALTIMETER SETTING					
LNAV MDA	440-1	422 (500-1)	440-1¼	422 (500-1¼)	
CIRCLING	500-1	482 (500-1)	540-1½ 522 (600-1½)	620-2 602 (700-2)	



RNAV (GPS) RWY 36

SC-3, 10 JUL 2025 to 07 AUG 2025

SC-3, 10 JUL 2025 to 07 AUG 2025