

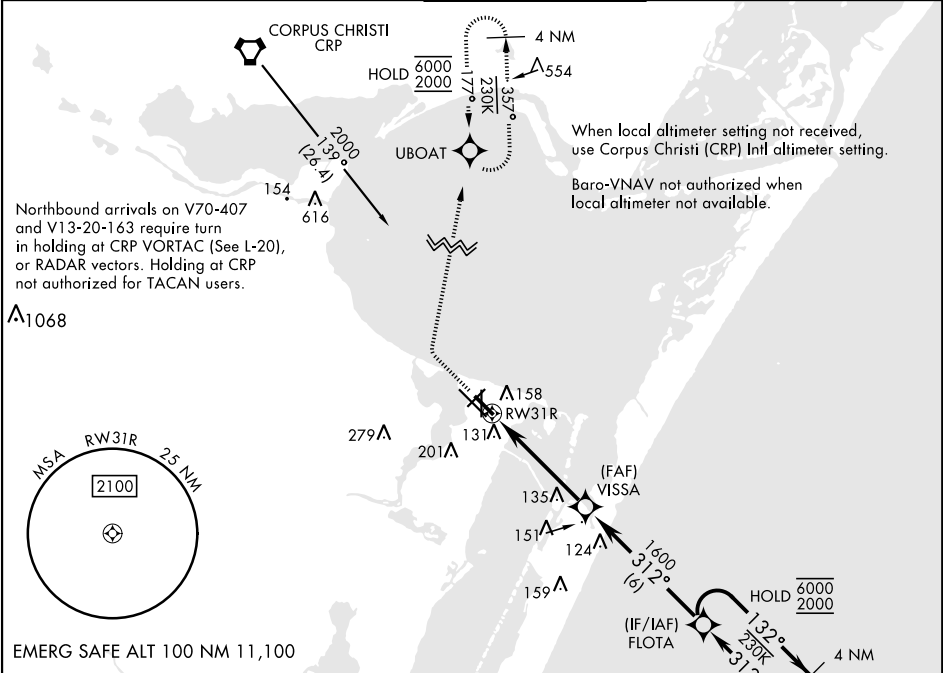
APCH CRS	Rwy ldg	5002
312°	TDZE	18
	Arpt Elev	18

[USN]

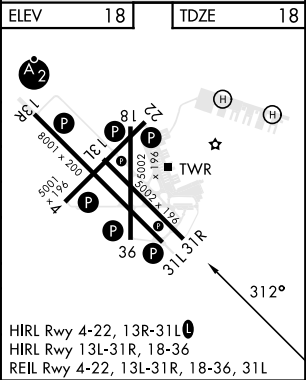
RNAV (GPS) RWY 31R

CORPUS CHRISTI NAS (TRUAX FLD) (KNGP)

RNP APCH			MISSED APPROACH: Climb to 600, then climbing right turn to 2000 direct UBOAT and hold.		
▼ For uncompensated Baro-VNAV systems, LNAV/VNAV NA below -15°C (5°F) or above 54°C (129°F).					
ATIS ★ 127.9 290.9	APP CON 128.675 343.75	NAVY CORPUS TOWER ★ 134.85 0 340.2	GND CON 118.7 257.85	CLNC DEL 314.3	ASR/ PAR



600	2000	UBOAT	VDP not authorized when using Corpus Christi (CRP) Intl altimeter setting.	4 NM Holding Pattern
VGSI TCH not coincident (45).				
CATEGORY	A	B	C	D
LNAV/VNAV DA	411-1½		393	(400-1½)
LNAV MDA	420-1	402 (500-1)	420-1½	402 (500-1½)
CIRCLING	460-1 442 (500-1)	480-1 462 (500-1)	520-1½ 502 (600-1½)	580-2 562 (600-2)
CORPUS CHRISTI (CRP) INTL ALTIMETER SETTING				
LNAV MDA	460-1	442 (500-1)	460-1½	442 (500-1½)
CIRCLING	500-1	482 (500-1)	540-1½ 522 (600-1½)	620-2 602 (700-2)



SC-3, 10 JUL 2025 to 07 AUG 2025

SC-3, 10 JUL 2025 to 07 AUG 2025