

APCH CRS	Rwy Idg	8001
312°	TDZE	17
	Arpt Elev	18

[USN]

CORPUS CHRISTI NAS (TRUAX FLD) (KNGP)

RNP APCH

T For uncompensated Baro-VNAV systems, LNAV/VNAV NA below -15°C (5°F) or above 54°C (129°F).

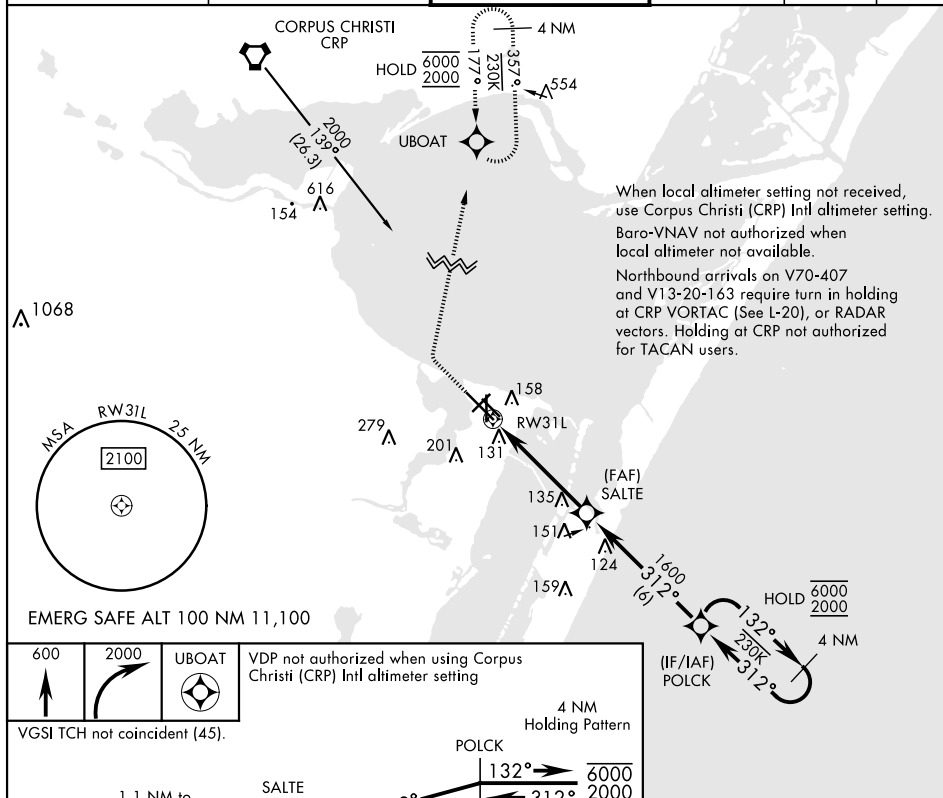
MISSED APPROACH: Climb to 600, then climbing right turn to 2000 direct UBOAT and hold.

ATIS ★
290.9

APP CON
128.675 343.75



NAVY CORPUS TOWER ★
134.85 L 340.2

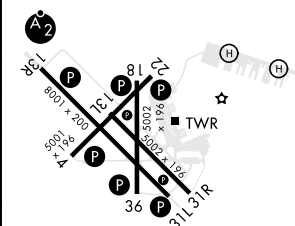
GND CON
118.7 257.85

CLNC DE
314.3ASR/
PAR

ELEV	18
------	----

TDZE	17
------	----

CATEGORY	A	B	C	D
RNAV/VNAV DA	412-1½		395 (400-1½)	
RNAV MDA	420-1	403 (500-1)	420-1½	403 (500-1½)
 CIRCLING	460-1 442 (500-1)	480-1 462 (500-1)	520-1½ 502 (600-1½)	580-2 562 (600-2)
CORPUS CHRISTI (CRP) INTL ALTIMETER SETTING				
RNAV MDA	460-1	443 (500-1)	460-1½	443 (500-1½)
 CIRCLING	500-1	482 (500-1)	540-1½ 522 (600-1½)	620-2 602 (700-2)



HIRL Rwy 4-22, 13R-31L 312°
HIRL Rwy 13L-31R, 18-36
REIL Rwy 4-22, 13L-31R, 18-36, 31L

CORPUS CHRISTI, TEXAS

27°42'N-97°17'W

CORPUS CHRISTI NAS (TRUAX FLD) (KNGP)

Amdt 2 30NOV23

RNAV (GPS) RWY 31L

SC-3, 10 JUL 2025 to 07 AUG 2025

SC-3, 10 JUL 2025 to 07 AUG 2025