

APCH CRS	Rwy Idg	5001
222°	TDZE	15
	Arpt Elev	18

[USN]

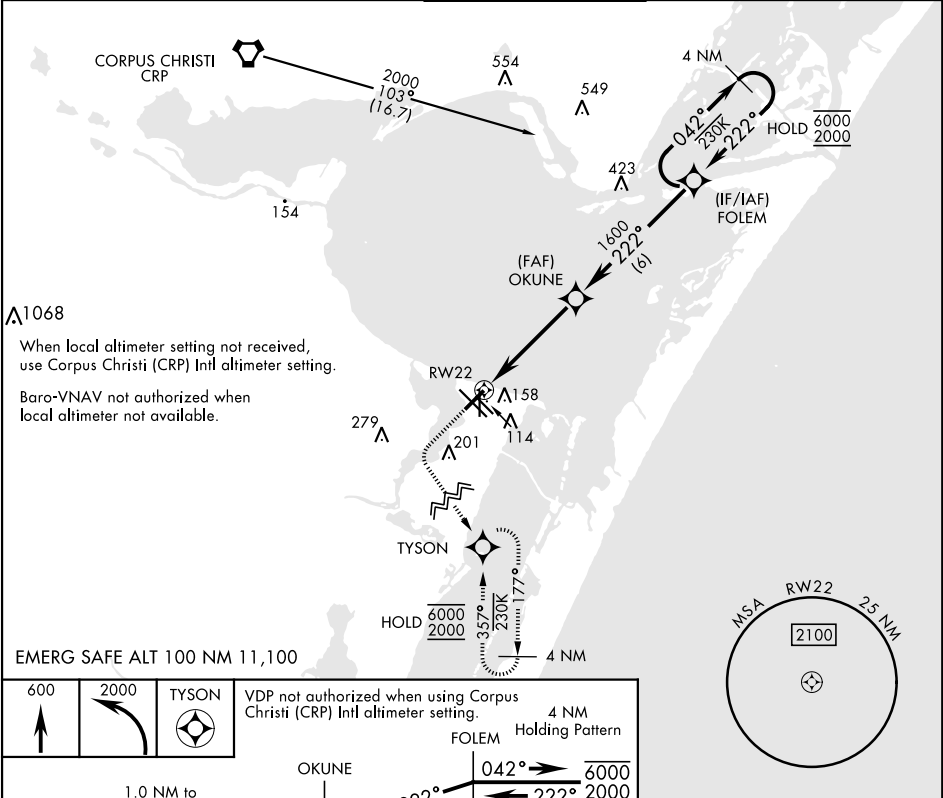
CORPUS CHRISTI NAS (TRUAX FLD) (KNGP)

RNP APCH

For uncompensated Baro-VNAV systems, LNAV/VNAV NA below -15° C (5° F) or above 54° C (129° F).

MISSED APPROACH: Climb to 600, then climbing left turn to 2000 direct TYSON and hold.

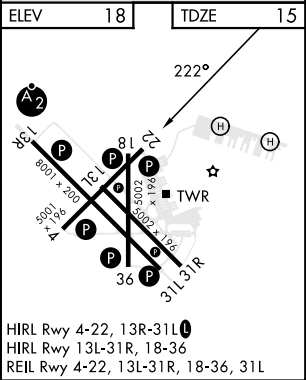
ATIS ★ 127.9 290.9	APP CON 128.675 343.75	NAVY CORPUS TOWER ★ 134.85 0 340.2	GND CON 118.7 257.85	CLNC DEL 314.3	ASR/ PAR
-----------------------	---------------------------	---------------------------------------	-------------------------	-------------------	-------------



CATEGORY	A	B	C	D
LNAV MDA	380-1	365	(400-1)	
LNAV/VNAV DA	320-7/8	305	(400-7/8)	380-1 365 (400-1)
C CIRCLING	460-1 422 (500-1)	480-1 462 (500-1)	520-1½ 502 (600-1½)	580-2 562 (600-2)

CORPUS CHRISTI (CRP) INTL ALTIMETER SETTING

LNAV MDA	400-1	385	(400-1)	400-1½	385	(400-1½)
C CIRCLING	500-1	482	(500-1)	540-1½ 522 (600-1½)	620-2 602 (700-2)	



SC-3, 10 JUL 2025 to 07 AUG 2025

SC-3, 10 JUL 2025 to 07 AUG 2025