

CORPUS CHRISTI, TEXAS

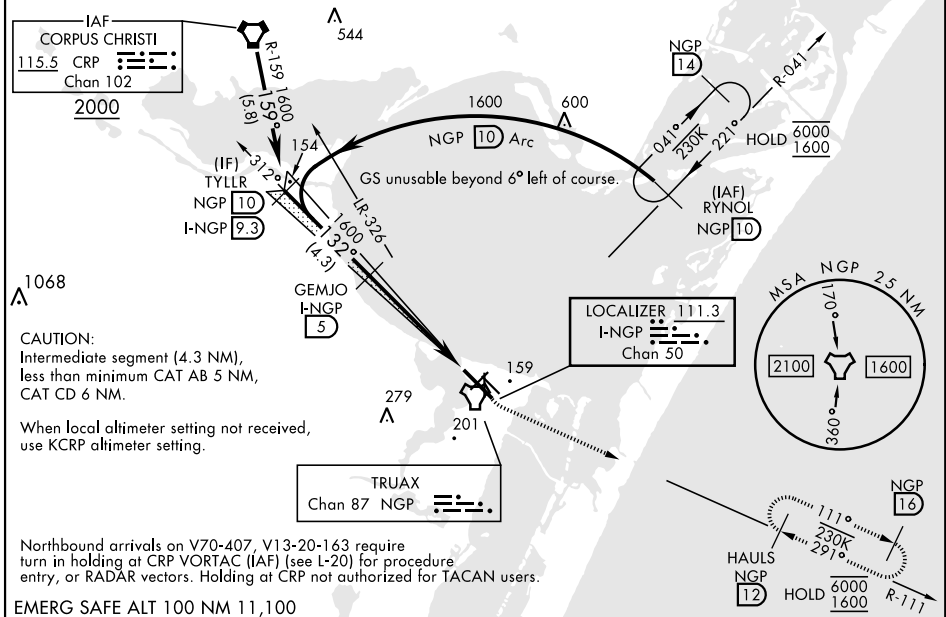
LOC/DME I-NGP 111.3 Chan 50	APCH CRS 132°	Rwy Idg 8001 TDZE 13 Arpt Elev 18
---	-------------------------	--

[USN]

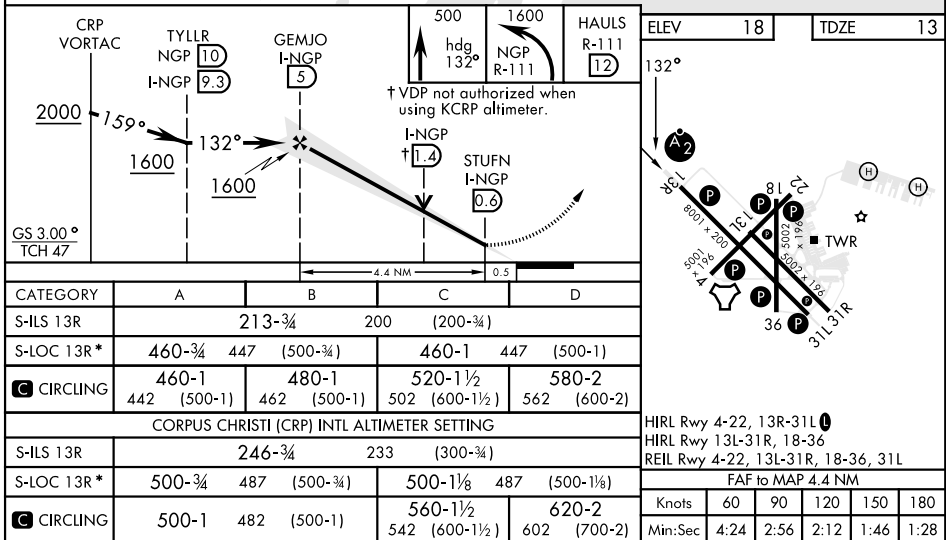
ILS Z or LOC Z RWY 13R

CORPUS CHRISTI NAS (TRUAX FLD) (KNGP)

DME required ▼ *When ALS inop, increase CAT AB vis to 1 mile, CAT CD to 1 1/2 miles.		SALSF A2		MISSED APPROACH: Climb to 500 hdg 132°, then climbing left turn to 1600 and intercept NGP TACAN R-111 to HAULS and hold. Continue climb-in-hold to 1600.			
ATIS ★ 127.9 290.9		APP CON 128.675 343.75		NAVY CORPUS TOWER ★ 134.85 0 340.2		GND CON 118.7 257.85	
						CLNC DEL 314.3	
						ASR/ PAR	



EMERG SAFE ALT 100 NM 11.100



CORPUS CHRISTI, TEXAS

27°42'N-97°17'W

CORPUS CHRISTI NAS (TRUAX FLD) (KNGP)

Amdt 1 28NOV24

ILS Z or LOC Z RWY 13R