

HI-TACAN X RWY 13R

TACAN NGP Chan 87	APCH CRS 147°	Rwy Idg 8001 TDZE 13 Arpt Elev 18
-----------------------------	-------------------------	--

[USN]

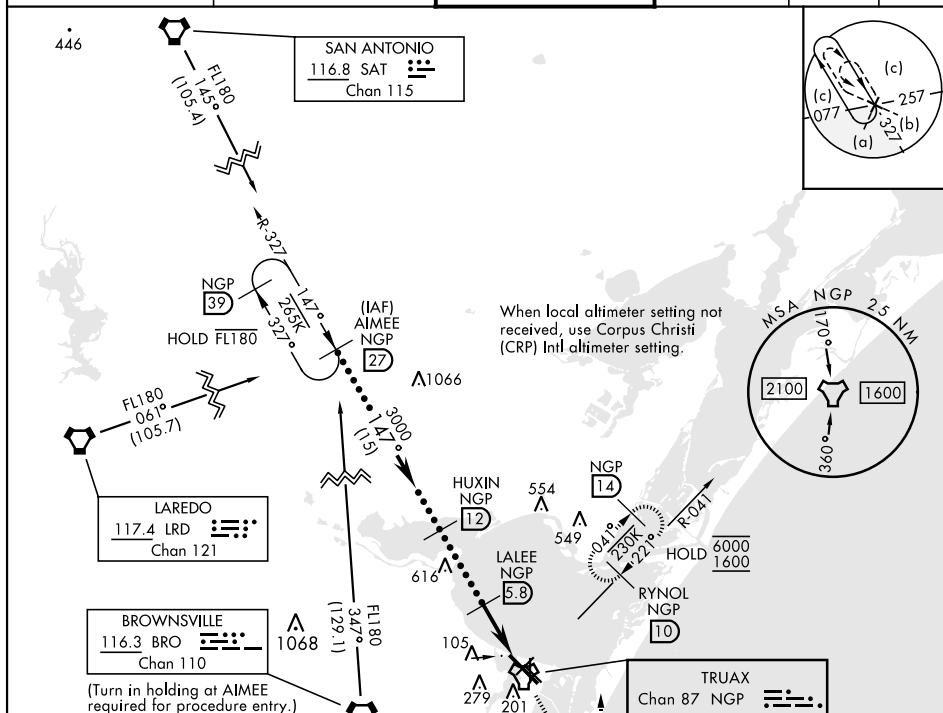
CORPUS CHRISTI NAS (TRUAX FLD) (KNGP)

T * When ALS inop, increase vis to 1 1/8 miles.

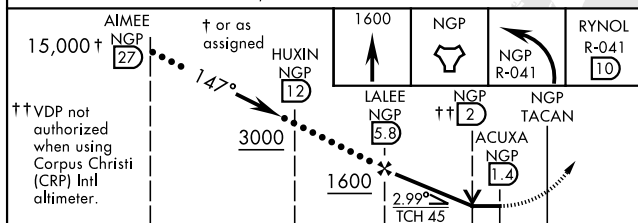
SALSF

MISSED APPROACH: Climb to 1600 direct NGP TACAN and turn left to intercept R-041 to RYNOL and hold.

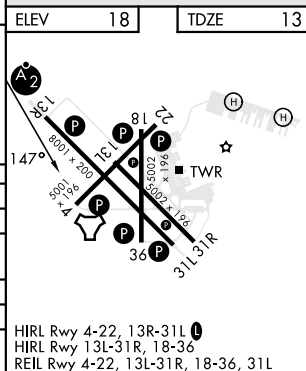
ATIS ★ 127.9 290.9	APP CON 120.9 348.725	NAVY CORPUS TOWER ★ 134.85 340.2	GND CON 118.7 257.85	CLNC DEL 314.3	ASR/ PAR
-----------------------	--------------------------	-------------------------------------	-------------------------	-------------------	-------------



EMERG SAFE ALT 100 NM 11,100



		← 4.4 NM →		0.5
CATEGORY	C	D	E	
S-13R*	400-7 $\frac{1}{8}$	387	(400- $\frac{7}{8}$)	
C CIRCLING	520-1 $\frac{1}{2}$ 502 (600-1 $\frac{1}{2}$)	580-2	562	(600-2)
CORPUS CHRISTI (CRP) INTL ALTIMETER SETTING				
S-13R *	420-1	407	(500-1)	
C CIRCLING	540-1 $\frac{1}{2}$ 522 (600-1 $\frac{1}{2}$)	620-2 602 (700-2)	620-2 $\frac{1}{4}$	602 (700-2 $\frac{1}{4}$)



CORPUS CHRISTI, TEXAS

27°42'N-97°17'W

CORPUS CHRISTI NAS (TRUAX FLD) (KNGP)

Orig 30NOV23

HI-TACAN X RWY 13R