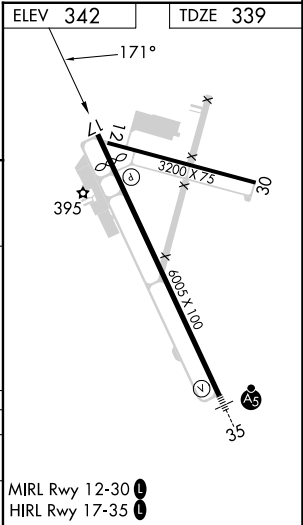
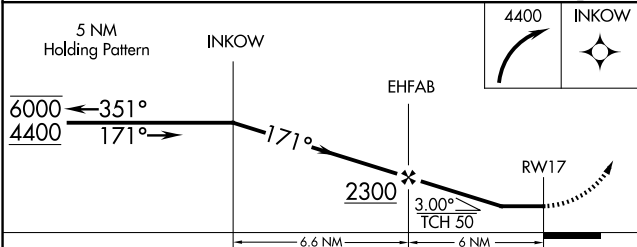
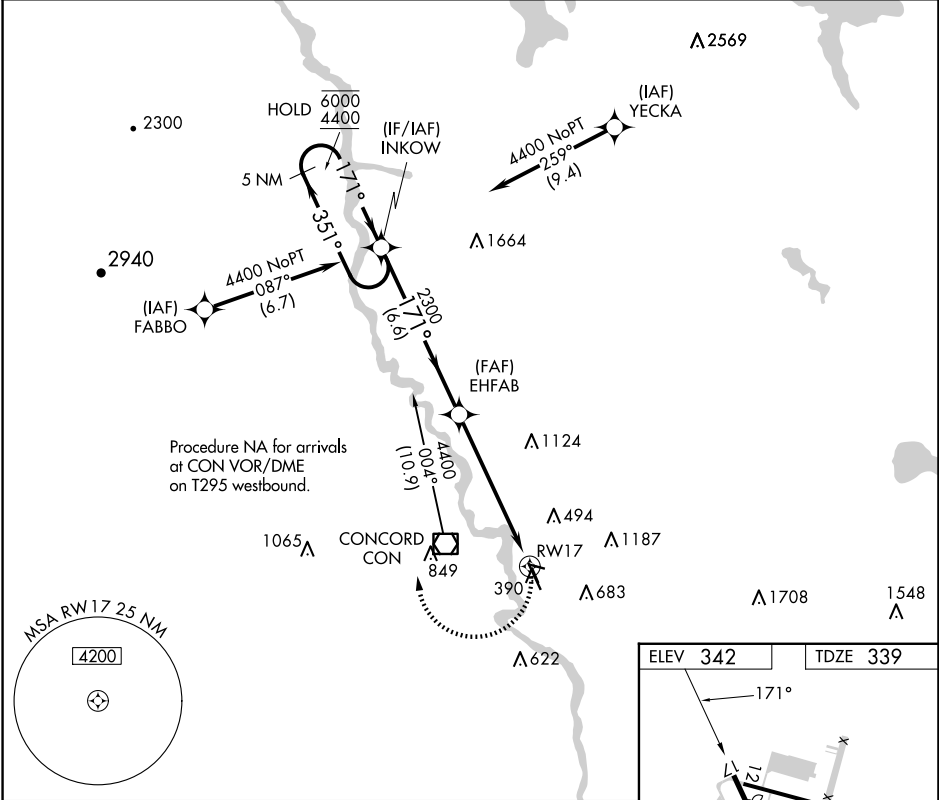


APP CRS	Rwy Idg	5364
171°	TDZE	339
	Apt Elev	342

RNAV (GPS) RWY 17  
CONCORD MUNI (CON)

RNP APCH - GPS.	MISSED APPROACH: Climbing right turn to 4400 direct INKOW and hold, continue climb-in-hold to 4400.
▼ Straight-in Rwy 17 NA at night, Circling Rwys 12, 17, 30 NA at night. ▲ Rwy 17 helicopter visibility reduction below 1 SM NA.	

ASOS 132.325	BOSTON APP CON 127.35 269.075	CLNC DEL 133.65	UNICOM 122.7 (CTAF) 0
-----------------	----------------------------------	--------------------	--------------------------



CATEGORY	A	B	C	D
LNAV MDA	1000-1	661 (700-1)	1000-1 7/8	661 (700-1 7/8)
CIRCLING	1000-1 658 (700-1)	1080-1 738 (800-1)	1500-3	1158 (1200-3)

NE-1, 10 JUL 2025 to 07 AUG 2025

NE-1, 10 JUL 2025 to 07 AUG 2025