

WAAS CH 86619 W28B	APP CRS 281°	Rwy Idg TDZE Apt Elev	8000 813 815
--	------------------------	-----------------------------	---

RNAV (GPS) Y RWY 28R
JOHN GLENN COLUMBUS INTL (CMH)

RNP APCH.

▼ Simultaneous approach authorized. For uncompensated Baro-VNAV systems, LNAV/VNAV NA below -19°C or above 54°C. LNAV procedure NA during simultaneous operations.

▲ Use of FD or AP providing RNAV track guidance required during simultaneous operations.

For inop ALS, increase LNAV/VNAV all Cats visibility or RVR 4500; increase LNAV Cat C/D visibility to 1 3/8 SM. #RVR 1800 authorized with use of FD or AP or HUD to DA.

MALSR



MISSED APPROACH:
Climb to 1400 then
climbing right turn to
3000 direct APE
VORTAC and hold.

D-ATIS	COLUMBUS APP CON	COLUMBUS TOWER	GND CON	CLNC DEL	CPDLC
124.6	125.95 371.975	132.7 257.8	121.9 348.6	126.3	

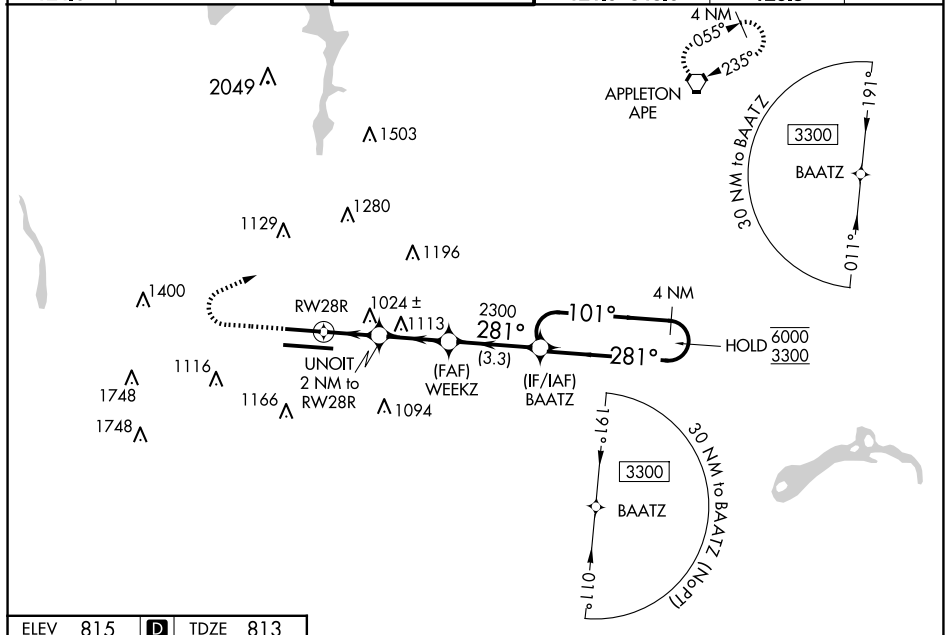


Figure 1: Example of a 4 NM Holding Pattern. The diagram illustrates a holding pattern for RW28R. The pattern is defined by a 101° heading and a 281° heading. The pattern is labeled "4 NM Holding Pattern". The approach path is a 1480* foot path, defined by a 101° heading and a 281° heading, labeled "1480*". The holding pattern is a series of turns around a fix, with a 4 NM distance between turns. The diagram also shows the approach path, which is a 1480* foot path. The approach path is defined by a 101° heading and a 281° heading. The approach path is labeled "1480*". The diagram also shows the holding pattern, which is a series of turns around a fix, with a 4 NM distance between turns. The holding pattern is labeled "4 NM Holding Pattern".