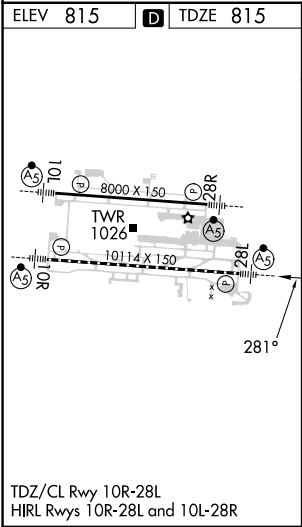
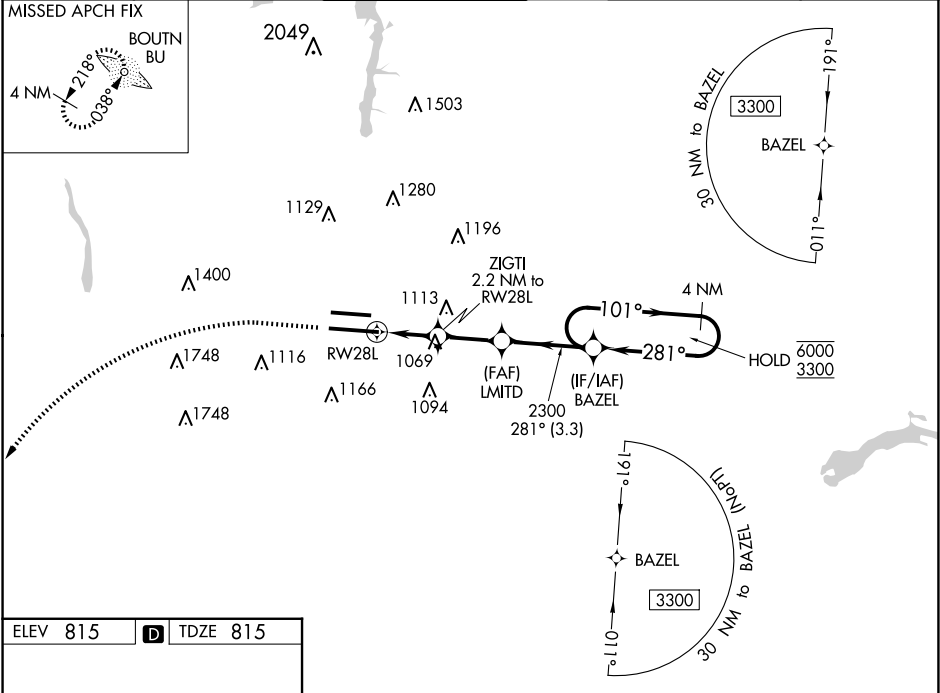


WAAS CH <b>48999</b> <b>W28A</b>	APP CRS <b>281°</b>	Rwy Ldg TDZE Apt Elev	<b>10114</b> <b>815</b> <b>815</b>
--	------------------------	-----------------------------	--

RNAV (GPS) Y RWY 28L

JOHN GLENN COLUMBUS INTL (CMH)

RNP APCH		MALSR		MISSED APPROACH: Climb to 1400 then climbing left turn to 3000 direct BOUTN LOM and hold.	
Simultaneous approach authorized. For uncompensated Baro-VNAV systems, LNAV/VNAV NA below -19°C or above 54°C. LNAV procedure NA during simultaneous operations. Use of FD or AP providing RNAV track guidance required during simultaneous operations. For inop ALS, increase LNAV Cat C/D visibility to 1½ SM.					
D-ATIS	COLUMBUS APP CON	COLUMBUS TOWER	GND CON	CLNC DEL	CPDLC
124.6	125.95 371.975	132.7 257.8	121.9 348.6	126.3	



1400	3000	BU	VGSI and RNAV glidepath not coincident (VGSI Angle 3.00/TCH 68).		4 NM Holding Pattern
*LNAV only.		ZIGTI 2.2 NM to RW28L	2300	101°	6000 3300
RW28L		*1.4 NM to RW28L	*1560	281°	2300
		1.4	0.8	2.3 NM	3.3 NM
CATEGORY	A	B	C	D	
LPV DA	1015/18		200 (200-½)		
LNAV/VNAV DA	1237/40		422 (500-¾)		
LNAV MDA	1320/24		505 (600-½)		
		1320/55		505 (600-1)	
CIRCLING	1340-1		525 (600-1)		
		1520-2		705 (800-2)	
		1520-2¼		705 (800-2¼)	