
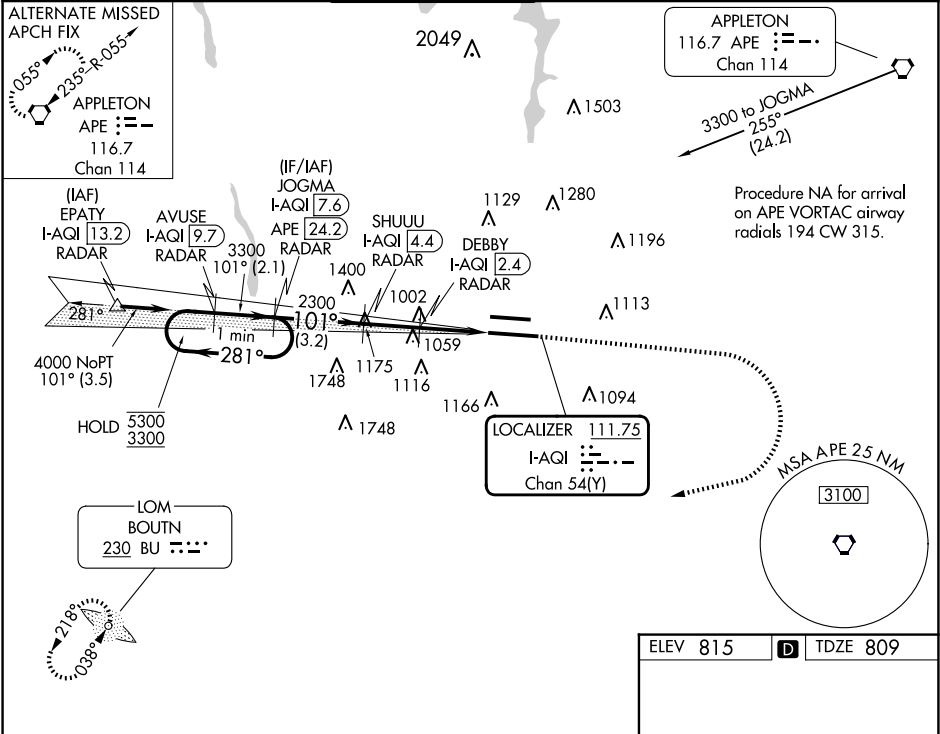


LOC/DME I-AQI <b>111.75</b> Chan <b>54 (Y)</b>	APP CRS <b>101°</b>	Rwy Ldg <b>10114</b> TDZE <b>809</b> Apt Elev <b>815</b>
--	------------------------	--

ILS or LOC RWY 10R  
JOHN GLENN COLUMBUS INTL (CMH)

ADF required. DME or RADAR required.			MALSR 	MISSED APPROACH: Climb to 1400 then climbing right turn to 3000 direct BU LOM and hold.	
Simultaneous approach authorized.					
D-ATIS 124.6	COLUMBUS APP CON 125.95 371.975	COLUMBUS TOWER 132.7 257.8	GND CON 121.9 348.6	CLNC DEL 126.3	CPDLC



VGS and ILS glidepath not coincident (VGS Angle 3.00°/ TCH 70').				1400	3000	BU
One Minute Holding Pattern						
JOGMA I-AQI 7.6, SHUUU I-AQI 4.4, DEBBY I-AQI 2.4, I-AQI 1.1, I-AQI 0.2				DME ANTENNA		
5300 3300 281° 101° 2300 1660				I-AQI 0.2		
GS 3.00° TCH 54				3.2 NM 2 NM 1.3 1.2 NM		
CATEGORY	A	B	C	D		
S-ILS 10R	1009/18		200 (200-½)			
S-LOC 10R	1260/24	451 (500-½)	1260/45	451 (500-¾)		
CIRCLING	1340-1	525 (600-1)	1520-2 705 (800-2)	1520-2 ¼ 705 (800-2¼)		

ELEV 815	D	TDZE 809
TDZ/CL Rwy 10R-28L		
HIRL Rwy 10R-28L and 10L-28R		
FAF to MAP 4.5 NM		
Knots	60	90 120 150 180
Min:Sec	4:30	3:00 2:15 1:48 1:30

EC-2, 10 JUL 2025 to 07 AUG 2025

EC-2, 10 JUL 2025 to 07 AUG 2025