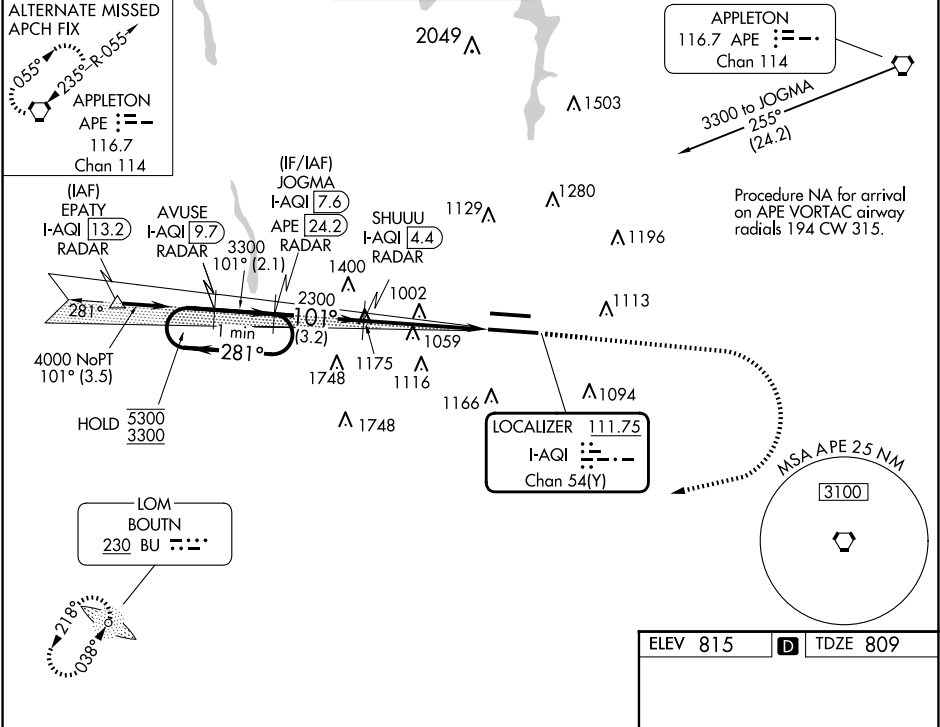


LOC/DME I-AQI <b>111.75</b> Chan <b>54 (Y)</b>	APP CRS <b>101°</b>	Rwy Ldg <b>10114</b> TDZE <b>809</b> Apt Elev <b>815</b>
--	------------------------	--

ILS RWY 10R (SA CAT I & II)  
JOHN GLENN COLUMBUS INTL (CMH)

ADF required. DME or RADAR required.	MALSR	MISSED APPROACH: Climb to 1400 then climbing right turn to 3000 direct BU LOM and hold.
Simultaneous approach authorized. SA CAT I, SA CAT II: Requires specific OPSPEC, MSPEC, or LOA approval.		

D-ATIS <b>124.6</b>	COLUMBUS APP CON <b>125.95 371.975</b>	COLUMBUS TOWER <b>132.7 257.8</b>	GND CON <b>121.9 348.6</b>	CLNC DEL <b>126.3</b>	CPDLC
------------------------	---	--------------------------------------	-------------------------------	--------------------------	-------



EC-2, 10 JUL 2025 to 07 AUG 2025

EC-2, 10 JUL 2025 to 07 AUG 2025