

COLUMBUS, MISSISSIPPI

VOR/DME A

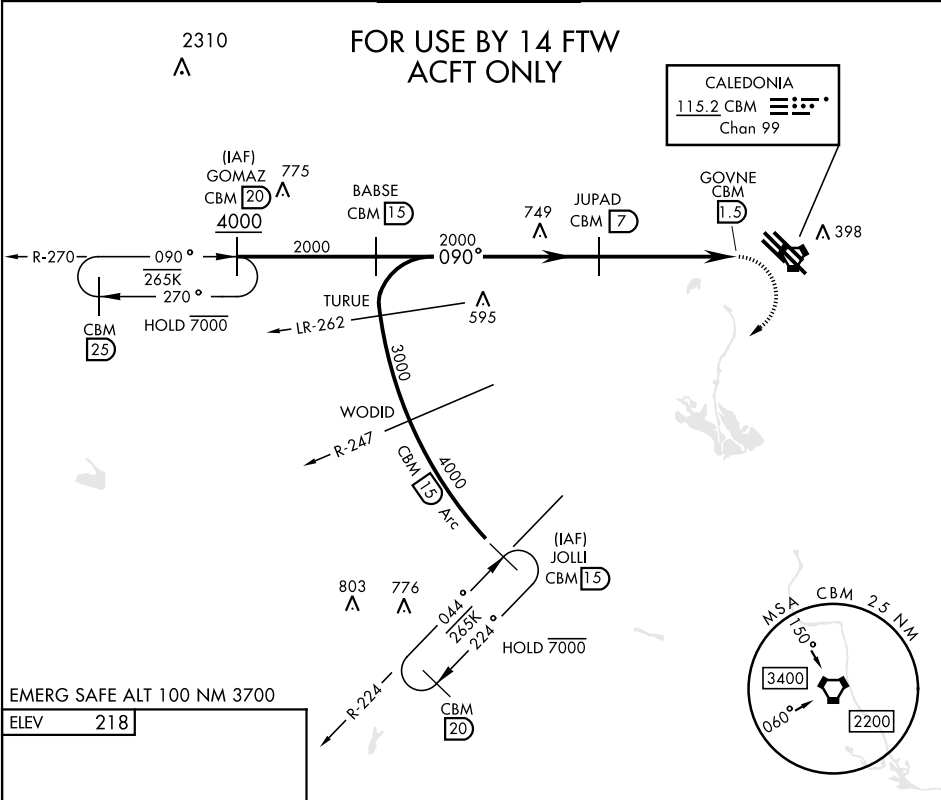
VORTAC CBM 115.2 Chan 99	APCH CRS 090°	Rwy Idg TDZE Arprt Elev N/A N/A 218
--	-------------------------	---

[USAF]

COLUMBUS AFB (KCBM)

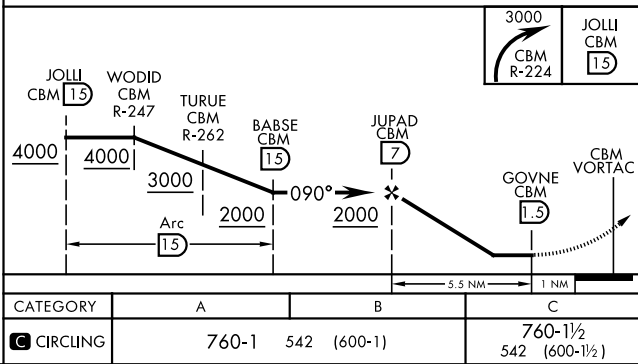
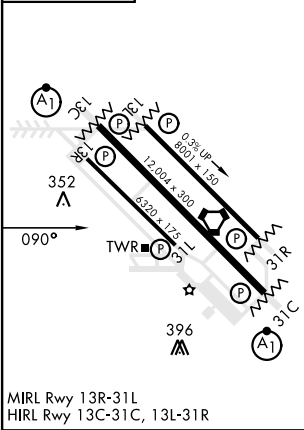
▼ When circling to Rwy 31R at night, operational VGSI required, remain on or above VGSI glidepath until threshold.	MISSED APPROACH: Climbing right turn to intercept the CBM R-224 outbound to JOLLI (CBM R-224/15) and hold. Maintain 3000.
--	---

ATIS ★ 115.2 273.5	APP CON ★ 134.55 350.3 (SE) 135.6 323.275 (SW) 126.075 239.25 (N)	TOWER ★ 126.65 379.925	GND CON ★ 121.9 275.8	CLNC DEL ★ 269.55
------------------------------	---	----------------------------------	---------------------------------	-----------------------------



EMERG SAFE ALT 100 NM 3700

ELEV 218



COLUMBUS, MISSISSIPPI

33°39'N-88°27'W

COLUMBUS AFB (KCBM)

Amtd 6 21APR22

VOR/DME A

SC-4, 10 JUL 2025 to 07 AUG 2025