

TACAN RWY 31R

VORTAC CBM	APCH CRS	Rwy Idg
115.2	302°	8001
Chan 99		TDZE 218
		Arprt Elev 218

[USAF]

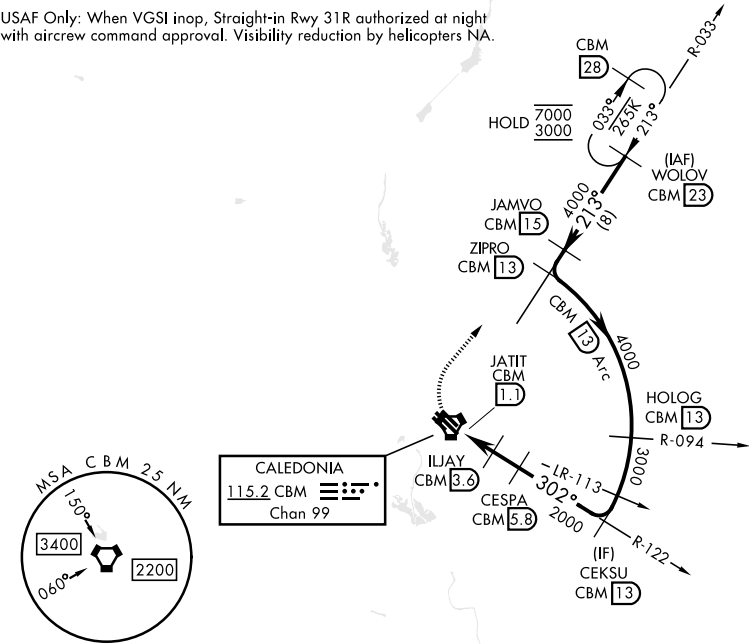
COLUMBUS AFB (KCBM)

<div>Missed approach requires use of RNAV or ATC RADAR monitoring.</div>	<div>MISSED APPROACH: Climbing right turn to WOLOV and hold as published. Maintain 3000.</div>
--	--

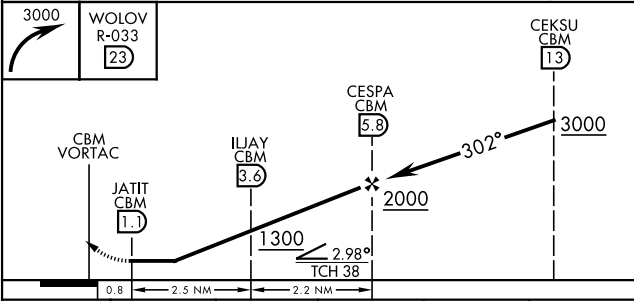
ATIS ★	APP CON ★	TOWER ★	GND CON ★	CLNC DEL ★
115.2 273.5	126.075 239.25 N 134.55 350.3 SE 135.6 323.275 SW	126.65 379.925	121.9 275.8	269.55

Straight-in Rwy 31R at Night, operational VGSI required, remain on or above VGSI glidepath until threshold.

USAF Only: When VGSI inop, Straight-in Rwy 31R authorized at night with aircrew command approval. Visibility reduction by helicopters NA.

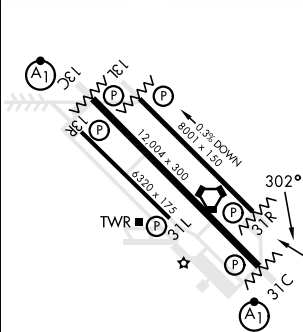


EMERG SAFE ALT 100 NM 3700



CATEGORY	A	B	C	D	E
S-31R	680/55	462 (500-1)	680-1 3/8	462 (500-1 3/8)	
CIRCLING	700-1 482 (500-1)	720-1 502 (600-1)	740-1 1/2 522 (600-1 1/2)	880-2 662 (700-2)	1240-3 1022 (1100-3)

ELEV	218	TDZE	218
------	-----	------	-----



MIRL Rwy 13R-31L
HIRL Rwy 13C-31C, 13L-31R

TACAN RWY 31R

SC-4, 10 JUL 2025 to 07 AUG 2025

SC-4, 10 JUL 2025 to 07 AUG 2025