

TACAN RWY 13L

VORTAC CBM 115.2 Chan 99	APCH CRS 142°	Rwy Idg 8001 TDZE 194 Arpt Elev 218
--	-------------------------	--

[USAF]

COLUMBUS AFB (KCBM)

T Missed Approach requires use of RNAV or ATC RADAR monitoring.
When circling to Rwy 31R at night, operational VGSI required, remain on or above VGSI glidepath until threshold.

MISSED APPROACH: Climbing left turn to WOLOV and hold as published. Maintain 3000.

ATIS★
115.2 273.5

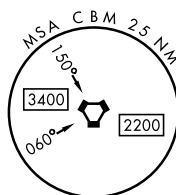
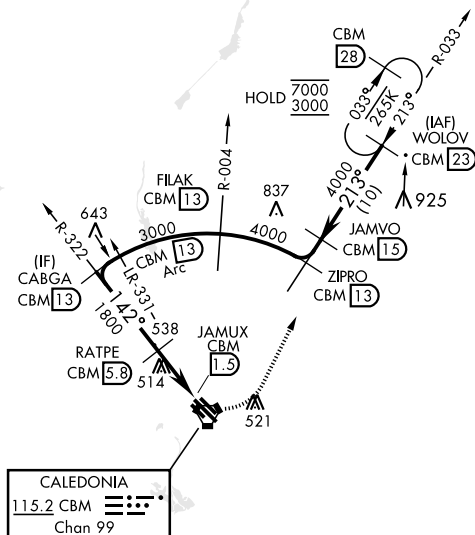
APP CON ★		
126.075	239.25	N
134.55	350.3	SE
135.6	323.275	SW

TOWER ★
126.65 379.5

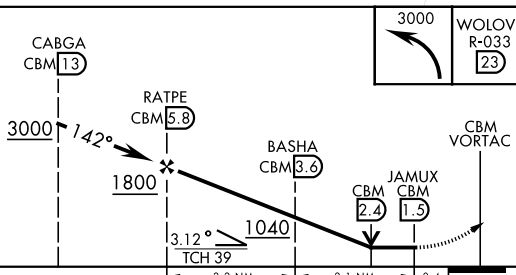
GND CON★
121.9 275.8


CLNC DEL★
269.55

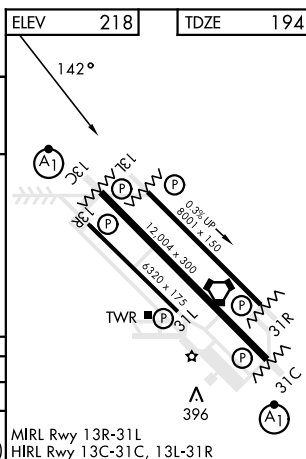
950



EMERG SAFE ALT 100 NM 3700



CATEGORY	A	B	C	D	E
S-13L	660/55 466 (500-1)		660-1½ 466 (500-1½)		
 CIRCLING	700-1 482 (500-1)	720-1 502 (600-1)	740-1½ 522 (600-1½)	880-2 662 (700-2)	1240-3 1022 (1100-3)



COLUMBUS, M|SS|SS|PP|

33° 39' N-88° 27' W

COLUMBUS AFB (KCBM)

Amdt 1 21APR22

TACAN RWY 13L

SC-4, 10 JUL 2025 to 07 AUG 2025