

COLUMBUS, MISSISSIPPI

RNAV (GPS) RWY 13C

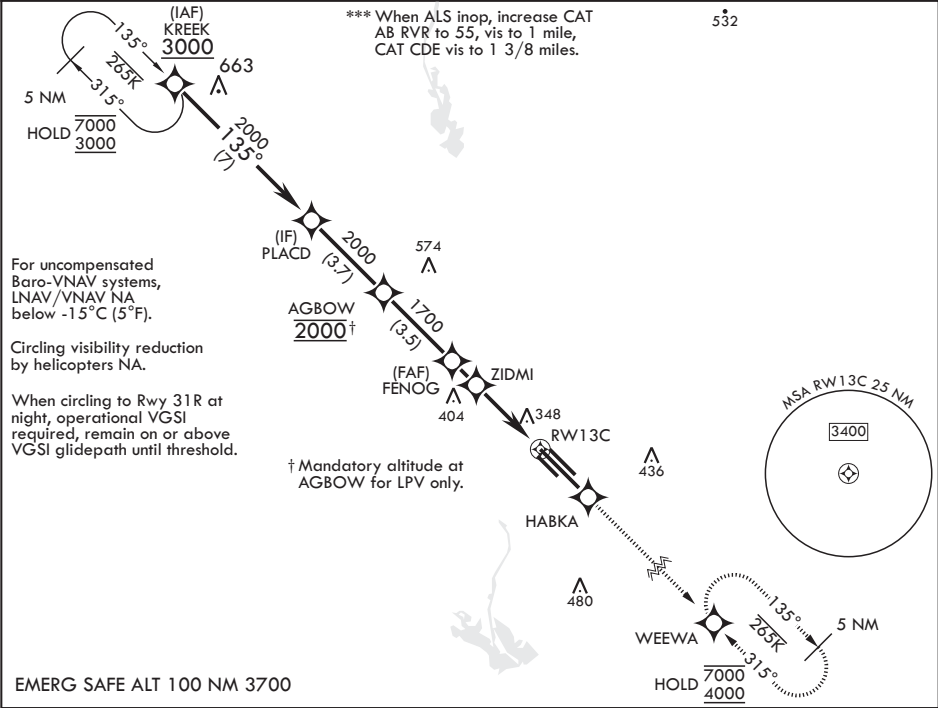
WAAS CH 53183 W13A	APCH CRS 135°	Rwy ldg TDZE Arpt Elev	12,004 196 218
--------------------------	------------------	------------------------------	----------------------

AL-91 (USAF)

COLUMBUS AFB (KCBM)

RNP APCH * When ALS inop increase RVR to 40, vis to 3/4 mile. ** When ALS inop, increase vis to 1 3/8 miles.	ALSF-1	MISSED APPROACH: Climb to 4000 direct HABKA, direct track to WEEWA and hold as published.
--	--------	---

ATIS★ 115.2 273.5	APP CON★ 126.075 239.25 N 134.55 350.3 SE 135.6 323.275 SW	TOWER★ 126.65 379.925	GND CON★ 121.9 275.8	CLNC DEL★ 269.55
----------------------	---	--------------------------	-------------------------	---------------------



KREEK	3000	135°	PLACD	AGBOW	FENOG	ZIDMI	RW13C	WEEWA	ELEV 218	TDZE 196
GP 3.00°	2000	† 2000	1700	1260	1.4 NM to RW13C					
TCH 49										
CATEGORY	A	B	C	D	E					
LPV DA*	396/24	200	(200-½)							
LNAV/VNAV DA**	666/50	470	(500-1)							
LNAV MDA***	680/24 484 (500-½)	680/50 484 (500-1)								
CIRCLING	700-1 482 (500-1)	720-1 502 (600-1)	740-1½ 522 (600-½)	880-2 662 (700-2)	1240-3 1022 (1100-3)					

MIRL Rwy 13R-31L
HIRL Rws 13C-31C, 13L-31R

COLUMBUS, MISSISSIPPI

33°39'N - 88°27'W

COLUMBUS AFB (KCBM)

Amtrd 4 07SEP23

RNAV (GPS) RWY 13C

SC-4, 10 JUL 2025 to 07 AUG 2025

SC-4, 10 JUL 2025 to 07 AUG 2025