

COLUMBUS, MISSISSIPPI

## ILS or LOC Y RWY 31C

COLUMBUS, MISSISSIPPI		31C	31R
LOC I-TBB	APCH CRS	Rwy Idg <b>12,004</b>	<b>8001</b>
<u><b>108.7</b></u>	<b>315°</b>	TDZE <b>213</b>	<b>218</b>
		Arprt Elev <b>218</b>	<b>218</b>

[USAF]

COLUMBUS AFB (KCBM)

- ▼** \* When ALS inop, increase RVR to 40, vis to  $\frac{3}{4}$  mile.  
**\*\*** When ALS inop, increase CAT AB RVR to 55, vis to 1 mile:  
 CAT CDE vis to  $1\frac{1}{4}$  miles.  
**†** When ALS inop, increase CAT AB RVR to 55, vis to 1 mile:  
 CAT CDE vis to  $1\frac{3}{8}$  miles.

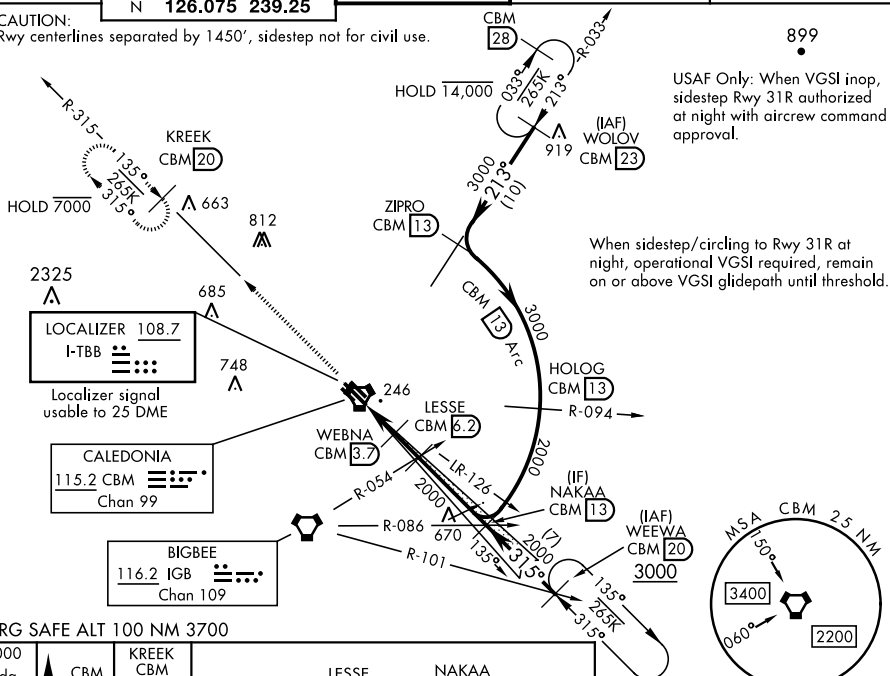


**MISSED APPROACH:** Climb heading 315° to intercept the VOR/TAC CBM R-315 outbound to KREEK (CBM R-315/20) and hold. Maintain 4000.

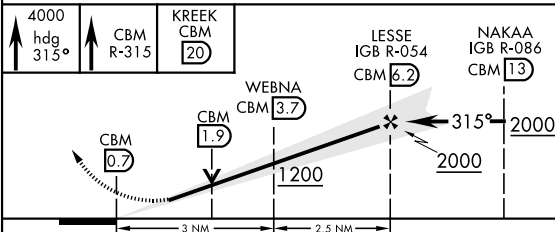
ATIS★ 115.2 273.5	SE SW	APP CON★ 134.55 350.3 135.6 323.275	TOWER★ 126.65 379.925	GND CON★ 121.9 275.8	CLNC DEL★ 269.55
----------------------	----------	---	--------------------------	-------------------------	---------------------

**\*\*\* CAUTION:**

Rwy centerlines separated by 1450', sidestep not for civil use.



EMERG SAFE ALT 100 NM 3700



CATEGORY	A	B	C	D	E
S-ILS 31C *	413/24		200	(200-½)	
S-LOC 31C **	640/24	427 (500-½)	640/40	427	(500-¾)
SIDESTEP RWY 31R ***	640/55	422 (500-1)	640-1 ¼	422	(500-1¼)
<b>C</b> CIRCLING	700-1 482 (500-1)	720-1 502 (600-1)	740-1 ½ 522 (600-1½)	880-2 662 (700-2)	1240-3 1022(1100-3)
LOCAL ALTIMETER, WITHOUT LAST STEPDOWN FIX					
S-LOC 31C †	720/24	507 (600-½)	720/55	507	(600-1)
SIDESTEP*** RWY 31R	760/55	542 (600-1)	760-1½	542	(600-1½)
<b>C</b> CIRCLING	760-1	542 (600-1)	760-1½ 542 (600-1½)	880-2 662 (700-2)	1240-3 1022(1100-3)

HIRL Rwy 13C-31C, 13L-31R  
MIRL Rwy 13R-31L

FAF to MAP 5.5 NM

Knots	60	90	120	150	180
Min:Sec	5:30	3:40	2:45	2:12	1:50

COLUMBUS, MISSISSIPPI

33° 39' N-88° 27' W

COLUMBUS AFB (KCBM)

## ILS or LOC Y RWY 31C

SC-4, 10 JUL 2025 to 07 AUG 2025

SC-4, 10 JUL 2025 to 07 AUG 2025